

EF-2 (Phospho-Thr56) Polyclonal Antibody

Catalog No: #12351



Package Size: #12351-1 50ul #12351-2 100ul

Orders: order@signalwayantibody.comSupport: tech@signalwayantibody.com

Description

Product Name	EF-2 (Phospho-Thr56) Polyclonal Antibody
Host Species	Rabbit
Clonality	Polyclonal
Purification	The antibody was affinity-purified from rabbit antiserum by affinity-chromatography using epitope-specific immunogen.
Applications	WB IHC IF ELISA
Species Reactivity	Hu Ms Rt
Specificity	Phospho-EF-2 (T56) Polyclonal Antibody detects endogenous levels of EF-2 protein only when phosphorylated at T56.
Immunogen Type	peptide
Immunogen Description	Synthesized peptide derived from human EF-2 around the phosphorylation site of T56.
Target Name	EF-2
Modification	Phospho
Other Names	EEF2; EF2; Elongation factor 2; EF-2
Accession No.	Swiss-Prot: P13639NCBI Gene ID: 1938
Target Species	human
SDS-PAGE MW	100kd
Concentration	1mg/ml
Formulation	Liquid in PBS containing 50% glycerol, 0.5% BSA and 0.02% sodium azide.
Storage	Store at -20°C/1 year

Application Details

Western blotting: 1/500 - 1/2000

Immunohistochemistry: 1/100 - 1/300

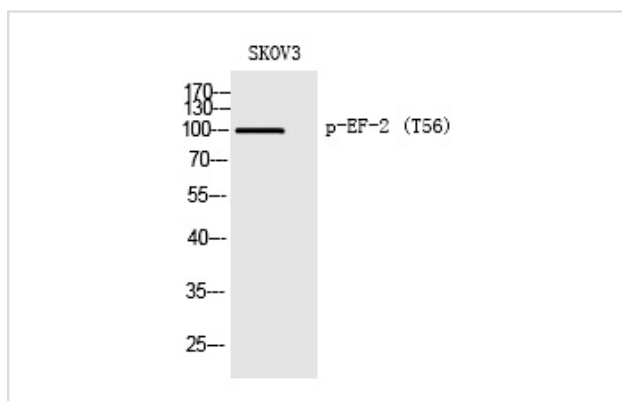
Immunofluorescence: 1/200 - 1/1000

ELISA: 1/10000

Not yet tested in other applications

Images

Western Blot analysis of SKOV3 cells using Phospho-EF-2 (T56) Polyclonal Antibody



Note: This product is for in vitro research use only and is not intended for use in humans or animals.