

## Rpb1 (Phospho-Ser1619) Polyclonal Antibody

Catalog No: #12352

Package Size: #12352-1 50ul #12352-2 100ul

Orders: [order@signalwayantibody.com](mailto:order@signalwayantibody.com)Support: [tech@signalwayantibody.com](mailto:tech@signalwayantibody.com)

## Description

Product Name	Rpb1 (Phospho-Ser1619) Polyclonal Antibody
Host Species	Rabbit
Clonality	Polyclonal
Purification	The antibody was affinity-purified from rabbit antiserum by affinity-chromatography using epitope-specific immunogen.
Applications	WB IHC IF ELISA
Species Reactivity	Hu Ms Rt Mk
Specificity	Phospho-Rpb1 (S1619) Polyclonal Antibody detects endogenous levels of Rpb1 protein only when phosphorylated at S1619.
Immunogen Type	peptide
Immunogen Description	Synthesized peptide derived from human Rpb1 around the phosphorylation site of S1619.
Target Name	Rpb1
Modification	Phospho
Other Names	POLR2A; POLR2; DNA-directed RNA polymerase II subunit RPB1; RNA polymerase II subunit B1; DNA-directed RNA polymerase II subunit A; DNA-directed RNA polymerase III largest subunit; RNA-directed RNA polymerase II subunit RPB1
Accession No.	Swiss-Prot: P24928NCBI Gene ID: 5430
Target Species	human
SDS-PAGE MW	250kd
Concentration	1mg/ml
Formulation	Liquid in PBS containing 50% glycerol, 0.5% BSA and 0.02% sodium azide.
Storage	Store at -20°C/1 year

## Application Details

Western blotting: 1/500 - 1/2000

Immunohistochemistry: 1/100 - 1/300

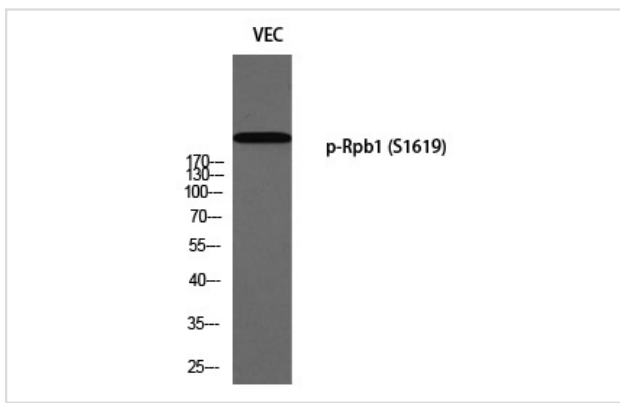
Immunofluorescence: 1/200 - 1/1000

ELISA: 1/10000

Not yet tested in other applications

## Images

Western blot analysis of VEC using p-Rpb1 (S1619) antibody.



Note: This product is for in vitro research use only and is not intended for use in humans or animals.