

14-3-3  $\theta/\tau$  (Phospho-Ser232) Polyclonal Antibody

Catalog No: #12358



Package Size: #12358-1 50ul #12358-2 100ul

Orders: [order@signalwayantibody.com](mailto:order@signalwayantibody.com)Support: [tech@signalwayantibody.com](mailto:tech@signalwayantibody.com)

## Description

Product Name	14-3-3 $\theta/\tau$ (Phospho-Ser232) Polyclonal Antibody
Host Species	Rabbit
Clonality	Polyclonal
Purification	The antibody was affinity-purified from rabbit antiserum by affinity-chromatography using epitope-specific immunogen.
Applications	WB IHC IF ELISA
Species Reactivity	Hu Ms Rt
Specificity	Phospho-14-3-3 $\theta/\tau$ (S232) Polyclonal Antibody detects endogenous levels of 14-3-3 $\theta/\tau$ protein only when phosphorylated at S232.
Immunogen Type	peptide
Immunogen Description	Synthesized peptide derived from human 14-3-3 $\theta/\tau$ around the phosphorylation site of S232.
Target Name	14-3-3 $\theta/\tau$
Modification	Phospho
Other Names	YWHAQ; 14-3-3 protein theta; 14-3-3 protein T-cell; 14-3-3 protein tau; Protein HS1
Accession No.	Swiss-Prot: P27348NCBI Gene ID: 5350
Target Species	human
SDS-PAGE MW	28kd
Concentration	1mg/ml
Formulation	Liquid in PBS containing 50% glycerol, 0.5% BSA and 0.02% sodium azide.
Storage	Store at -20°C/1 year

## Application Details

Western blotting: 1/500 - 1/2000

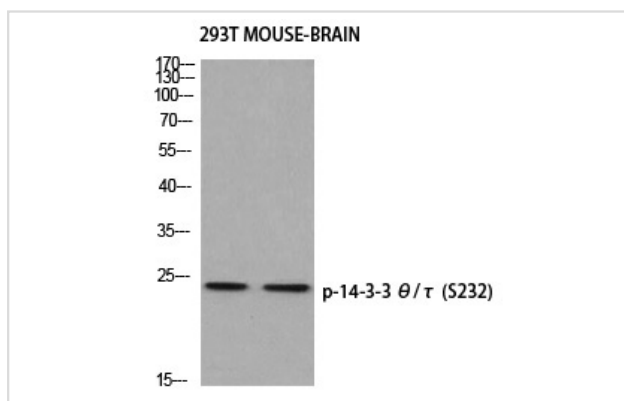
Immunohistochemistry: 1/100 - 1/300

Immunofluorescence: 1/200 - 1/1000

ELISA: 1/5000

Not yet tested in other applications

## Images



Western blot analysis of 293T MOUSE-BRAIN using p-14-3-3 θ/τ (S232) antibody.

---

Note: This product is for in vitro research use only and is not intended for use in humans or animals.