

## DNAM-1 (Phospho-Ser329) Polyclonal Antibody

Catalog No: #12361



Package Size: #12361-1 50ul #12361-2 100ul

Orders: [order@signalwayantibody.com](mailto:order@signalwayantibody.com)Support: [tech@signalwayantibody.com](mailto:tech@signalwayantibody.com)

## Description

Product Name	DNAM-1 (Phospho-Ser329) Polyclonal Antibody
Host Species	Rabbit
Clonality	Polyclonal
Purification	The antibody was affinity-purified from rabbit antiserum by affinity-chromatography using epitope-specific immunogen.
Applications	WB IHC IF ELISA
Species Reactivity	Hu Ms Mk
Specificity	Phospho-DNAM-1 (S329) Polyclonal Antibody detects endogenous levels of DNAM-1 protein only when phosphorylated at S329.
Immunogen Type	peptide
Immunogen Description	Synthesized peptide derived from human DNAM-1 around the phosphorylation site of S329.
Target Name	DNAM-1
Modification	Phospho
Other Names	CD226; DNAM1; CD226 antigen; DNAX accessory molecule 1; DNAM-1; CD antigen CD226
Accession No.	Swiss-Prot: Q15762NCBI Gene ID: 10666
Target Species	human
SDS-PAGE MW	60kd
Concentration	1mg/ml
Formulation	Liquid in PBS containing 50% glycerol, 0.5% BSA and 0.02% sodium azide.
Storage	Store at -20°C/1 year

## Application Details

Western blotting: 1/500 - 1/2000

Immunohistochemistry: 1/100 - 1/300

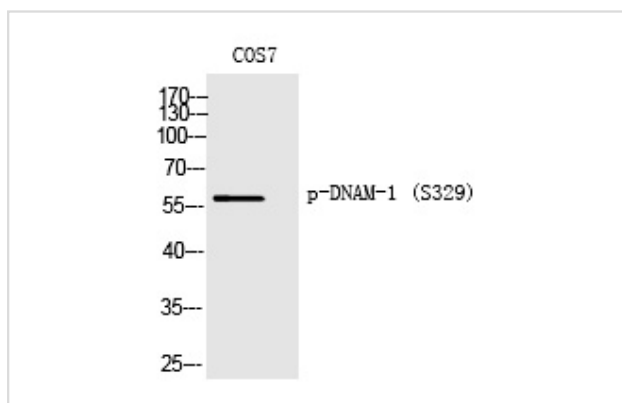
Immunofluorescence: 1/200 - 1/1000

ELISA: 1/40000

Not yet tested in other applications

## Images

Western Blot analysis of COS7 cells using Phospho-DNAM-1 (S329) Polyclonal Antibody



Note: This product is for in vitro research use only and is not intended for use in humans or animals.