

p120 (Phospho-Tyr228) Polyclonal Antibody

Catalog No: #12363



Package Size: #12363-1 50ul #12363-2 100ul

Orders: order@signalwayantibody.comSupport: tech@signalwayantibody.com

Description

Product Name	p120 (Phospho-Tyr228) Polyclonal Antibody
Host Species	Rabbit
Clonality	Polyclonal
Purification	The antibody was affinity-purified from rabbit antiserum by affinity-chromatography using epitope-specific immunogen.
Applications	WB IHC IF ELISA
Species Reactivity	Hu Ms Rt
Specificity	Phospho-p120 (Y228) Polyclonal Antibody detects endogenous levels of p120 protein only when phosphorylated at Y228.
Immunogen Type	peptide
Immunogen Description	Synthesized peptide derived from human p120 around the phosphorylation site of Y228.
Target Name	p120
Modification	Phospho
Other Names	CTNND1; KIAA0384; Catenin delta-1; Cadherin-associated Src substrate; CAS; p120 catenin; p120(ctn); p120(cas)
Accession No.	Swiss-Prot: O60716NCBI Gene ID: 1500
Target Species	human
SDS-PAGE MW	108kd
Concentration	1mg/ml
Formulation	Liquid in PBS containing 50% glycerol, 0.5% BSA and 0.02% sodium azide.
Storage	Store at -20°C/1 year

Application Details

Western blotting: 1/500 - 1/2000

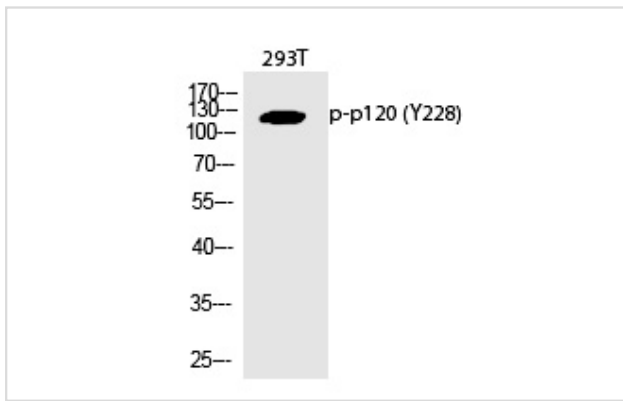
Immunohistochemistry: 1/100 - 1/300

Immunofluorescence: 1/200 - 1/1000

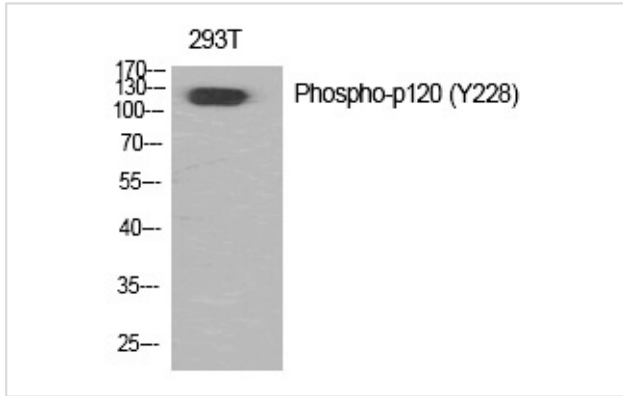
ELISA: 1/10000

Not yet tested in other applications

Images



Western Blot analysis of 293T cells using Phospho-p120 (Y228) Polyclonal Antibody



Western Blot analysis of 293T cells using Phospho-p120 (Y228) Polyclonal Antibody

Note: This product is for in vitro research use only and is not intended for use in humans or animals.