

NLRP3(Phospho-Ser295) Antibody

Catalog No: #13295



Package Size: #13295-1 50ul #13295-2 100ul

Orders: order@signalwayantibody.com

Support: tech@signalwayantibody.com

Description

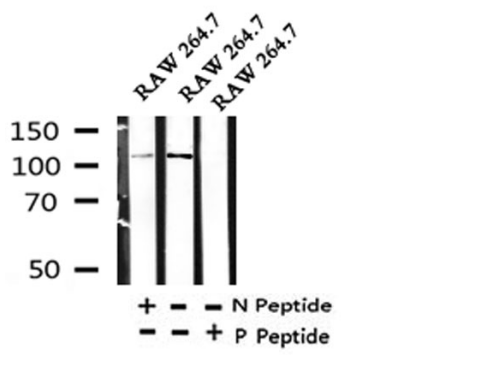
Product Name	NLRP3(Phospho-Ser295) Antibody
Host Species	Rabbit
Clonality	Polyclonal
Purification	The antibody is from purified rabbit serum by affinity purification via sequential chromatography on phospho- and non-phospho-peptide affinity columns. Antibodies were produced by immunizing rabbits with synthetic phosphopeptide and KLH conjugates. Antibodies were purified by affinity-chromatography using epitope-specific phosphopeptide. Non-phospho specific antibodies were removed by chromatography using non-phosphopeptide.
Applications	WB
Specificity	Phospho-NLRP3(Ser295) Antibody detects endogenous levels of NLRP3 only when phosphorylated at Ser295
Immunogen Description	A synthesized peptide derived from human NLRP3 around the phosphorylation site of Ser295
Target Name	NLRP3
Modification	Phospho-Ser295
Other Names	AGTAVPRL; AII/AVP; Angiotensin/vasopressin receptor AII/AVP like; Angiotensin/vasopressin receptor AII/AVP-like; C1orf7; Caterpillar protein 1.1; CIAS 1; CIAS1; CLR1.1; Cold autoinflammatory syndrome 1; Cold autoinflammatory syndrome 1 protein; Cryopyrin; Familial cold autoinflammatory syndrome; FCAS; FCU; LRR and PYD domains-containing protein 3; Muckle-Wells syndrome; MWS; NACHT; NACHT LRR and PYD containing protein 3; NALP 3; NALP3; NALP3_HUMAN; NLR family pyrin domain containing 3; NLRP3; PYPAF 1; PYPAF1; PYRIN containing APAF1 like protein 1; PYRIN-containing APAF1-like protein 1
Accession No.	Swiss-Prot#: Q96P20 NCBI Gene ID:114548
Target Species	Hu Ms
Calculated MW	118kd
Concentration	1mg/ml
Formulation	Rabbit IgG in phosphate buffered saline , pH 7.4, 150mM NaCl, 0.02% sodium azide and 50% glycerol.
Storage	Store at -20 °C.Stable for 12 months from date of receipt

Application Details

WB 1:500-1:2000

Images

Western blot analysis of Phospho-NLRP3(Ser295) in lysates of RAW 264.7, using Phospho-NLRP3(Ser295) Antibody(13295).



Note: This product is for in vitro research use only and is not intended for use in humans or animals.