

## FANCA (Phospho-Ser1149) Polyclonal Antibody

Catalog No: #12367



Package Size: #12367-1 50ul #12367-2 100ul

Orders: [order@signalwayantibody.com](mailto:order@signalwayantibody.com)Support: [tech@signalwayantibody.com](mailto:tech@signalwayantibody.com)

## Description

Product Name	FANCA (Phospho-Ser1149) Polyclonal Antibody
Host Species	Rabbit
Clonality	Polyclonal
Purification	The antibody was affinity-purified from rabbit antiserum by affinity-chromatography using epitope-specific immunogen.
Applications	WB IHC IF ELISA
Species Reactivity	Hu
Specificity	Phospho-FANCA (S1149) Polyclonal Antibody detects endogenous levels of FANCA protein only when phosphorylated at S1149.
Immunogen Type	peptide
Immunogen Description	Synthesized peptide derived from human FANCA around the phosphorylation site of S1149.
Target Name	FANCA
Modification	Phospho
Other Names	FANCA; FAA; FACA; FANCH; Fanconi anemia group A protein; Protein FACA
Accession No.	Swiss-Prot: O15360NCBI Gene ID: 2175
Target Species	human
SDS-PAGE MW	162kd
Concentration	1mg/ml
Formulation	Liquid in PBS containing 50% glycerol, 0.5% BSA and 0.02% sodium azide.
Storage	Store at -20°C/1 year

## Application Details

Western blotting: 1/500 - 1/2000

Immunohistochemistry: 1/100 - 1/300

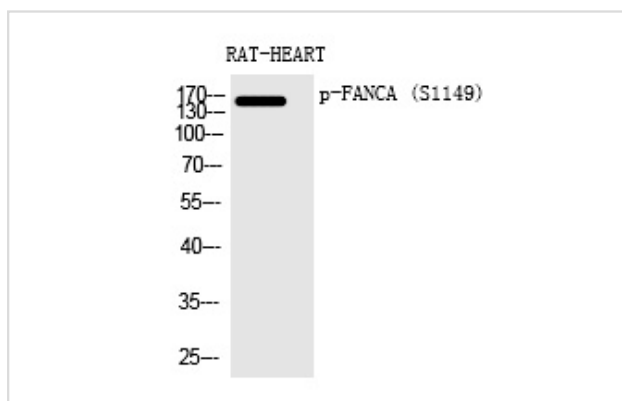
Immunofluorescence: 1/200 - 1/1000

ELISA: 1/5000

Not yet tested in other applications

## Images

Western Blot analysis of RAT-HEART cells using Phospho-FANCA (S1149) Polyclonal Antibody



Note: This product is for in vitro research use only and is not intended for use in humans or animals.