

## RAMP2 antibody

Catalog No: #22553

Orders: order@signalwayantibody.com

Support: tech@signalwayantibody.com

## Description

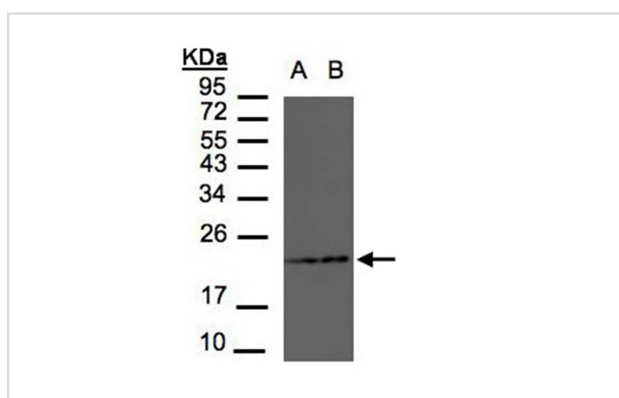
Product Name	RAMP2 antibody
Host Species	Rabbit
Clonality	Polyclonal
Purification	Purified by antigen-affinity chromatography.
Applications	WB
Species Reactivity	Human;Mouse;Rat
Immunogen Type	Peptide
Immunogen Description	Synthetic peptide contain a sequence corresponding to a region within amino acids 111 and 175 of Human RAMP2
Target Name	RAMP2
Accession No.	NCBI Gene ID: 10266NCBI mRNA#: NM_005854NCBI Protein#: NP_005845
Concentration	1mg/ml
Formulation	Supplied in 0.1M Tris-buffered saline with 10% Glycerol (pH7.0). 0.01% Thimerosal was added as a preservative.
Storage	Store at -20°C for long term preservation (recommended). Store at 4°C for short term use.

## Application Details

Predicted MW: 20kd

Western blotting: 1:500-1:3000

## Images



Sample(30 ug of whole cell lysate)  
 A: MOLT4  
 B: Raji  
 12% SDS PAGE  
 Primary antibody diluted at 1: 1500

## Background

The protein encoded by this gene is a member of the RAMP family of single-transmembrane-domain proteins, called receptor (calcitonin) activity modifying proteins (RAMPs). RAMPs are type I transmembrane proteins with an extracellular N terminus and a cytoplasmic C terminus. RAMPs are required to transport calcitonin-receptor-like receptor (CRLR) to the plasma membrane. CRLR, a receptor with seven transmembrane domains, can function as either a calcitonin-gene-related peptide (CGRP) receptor or an adrenomedullin receptor, depending on which members of the RAMP family are expressed. In the presence of this (RAMP2) protein, CRLR functions as an adrenomedullin receptor. The RAMP2 protein is involved in core

glycosylation and transportation of adrenomedullin receptor to the cell surface. [provided by RefSeq]

---

Note: This product is for in vitro research use only and is not intended for use in humans or animals.