

## MLK3 (Phospho-Ser674) Polyclonal Antibody

Catalog No: #12393



Package Size: #12393-1 50ul #12393-2 100ul

Orders: [order@signalwayantibody.com](mailto:order@signalwayantibody.com)Support: [tech@signalwayantibody.com](mailto:tech@signalwayantibody.com)

## Description

Product Name	MLK3 (Phospho-Ser674) Polyclonal Antibody
Host Species	Rabbit
Clonality	Polyclonal
Purification	The antibody was affinity-purified from rabbit antiserum by affinity-chromatography using epitope-specific immunogen.
Applications	WB ELISA
Species Reactivity	Hu Ms Rt
Specificity	Phospho-MLK3 (S674) Polyclonal Antibody detects endogenous levels of MLK3 protein only when phosphorylated at S674.
Immunogen Type	peptide
Immunogen Description	Synthesized peptide derived from human MLK3 around the phosphorylation site of S674.
Target Name	MLK3
Modification	Phospho
Other Names	MAP3K11; MLK3; PTK1; SPRK; Mitogen-activated protein kinase kinase kinase 11; Mixed lineage kinase 3; Src-homology 3 domain-containing proline-rich kinase
Accession No.	Swiss-Prot: Q16584NCBI Gene ID: 4296
Target Species	human
Concentration	1mg/ml
Formulation	Liquid in PBS containing 50% glycerol, 0.5% BSA and 0.02% sodium azide.
Storage	Store at -20°C/1 year

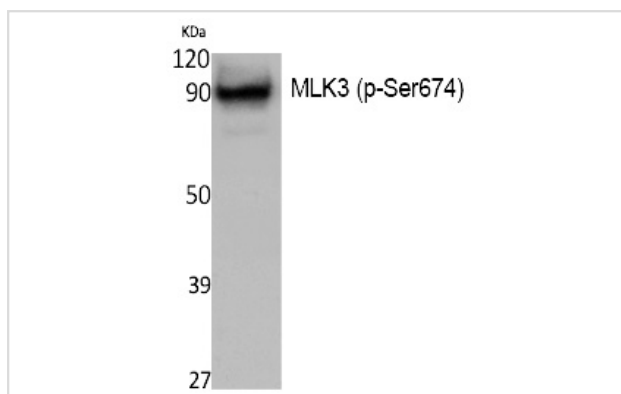
## Application Details

Western blotting: 1/500 - 1/2000

ELISA: 1/5000

Not yet tested in other applications

## Images



Western Blot analysis of NIH-3T3, cells using Phospho-MLK3 (S674) Polyclonal Antibody

---

Note: This product is for in vitro research use only and is not intended for use in humans or animals.