

# Acetyl Lysine Monoclonal Antibody

Catalog No: #HW098



Package Size: #HW098-1 50ul #HW098-2 100ul

Orders: [order@signalwayantibody.com](mailto:order@signalwayantibody.com)

Support: [tech@signalwayantibody.com](mailto:tech@signalwayantibody.com)

## Description

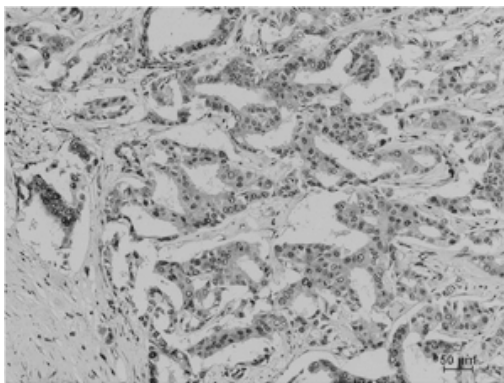
Product Name	Acetyl Lysine Monoclonal Antibody
Host Species	Mouse
Clonality	Monoclonal
Purification	The antibody was affinity-purified from antiserum by affinity-chromatography
Applications	WB IHC
Specificity	The antibody detects endogenous Acetyl Lysine protein.
Immunogen Type	Protein
Immunogen Description	Purified Protein
Accession No.	Swiss-Prot: NCBI Gene ID:
Concentration	1mg/ml
Formulation	PBS, pH 7.4, containing 0.02% sodium azide as Preservative and 50% Glycerol.
Storage	Store at -20°C/1 year

## Application Details

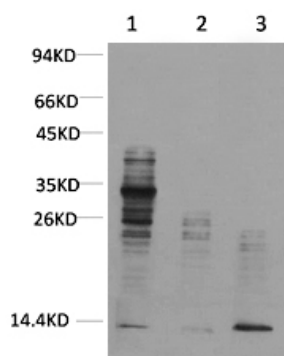
Western blotting: 1:1000-2000

IHC: 1:200-500

## Images



Immunohistochemical analysis of paraffin-embedded Human Breast Carcinoma using Acetyl Lysine Monoclonal Antibody.



Western blot analysis of 1) Mouse Brain Tissue, 2) HeLa, 3) HeLa+TSA Treated using Acetyl Lysine Monoclonal Antibody.

## Published Papers

---

el at., Glycyrrhiza uralensis Fisch. and its active components mitigate Semen Strychni-induced neurotoxicity through regulating high mobility group box 1 (HMGB1) translocation. In Biomed Pharmacother on 2022 May by Xiaoyu Duan, Jing Wen,et al..PMID:35358800, , (2022)

[PMID:35358800](#)

---

---

Note: This product is for in vitro research use only and is not intended for use in humans or animals.