

# Pan Methylated Lysine Monoclonal Antibody

Catalog No: #HW099



Package Size: #HW099-1 50ul #HW099-2 100ul

Orders: [order@signalwayantibody.com](mailto:order@signalwayantibody.com)

Support: [tech@signalwayantibody.com](mailto:tech@signalwayantibody.com)

## Description

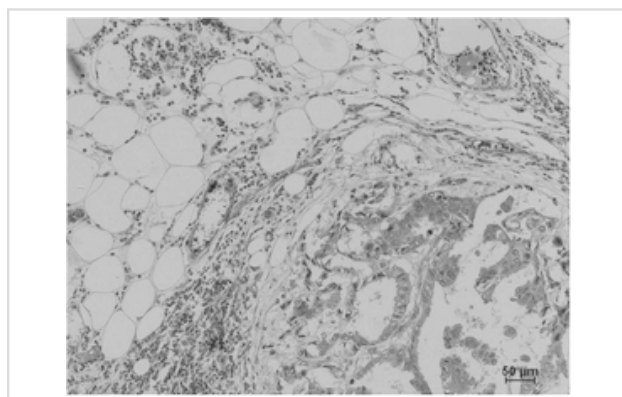
Product Name	Pan Methylated Lysine Monoclonal Antibody
Host Species	Mouse
Clonality	Monoclonal
Purification	The antibody was affinity-purified from antiserum by affinity-chromatography
Applications	WB IHC
Specificity	The antibody detects endogenous Pan Methylated Lysine protein.
Immunogen Type	Protein
Immunogen Description	Conjugated Protein
Concentration	1mg/ml
Formulation	PBS, pH 7.4, containing 0.02% sodium azide as Preservative and 50% Glycerol.
Storage	Store at -20°C/1 year

## Application Details

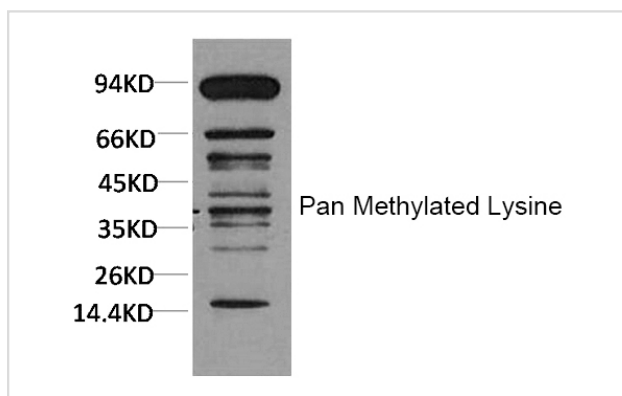
Western blotting: 1:1000-2000

IHC: 1:200-500

## Images



Immunohistochemical analysis of paraffin-embedded Human Breast Carcinoma using Pan Methylated Lysine Monoclonal Antibody.



Western blot analysis of HeLa using Pan Methylated Lysine Monoclonal Antibody.

---

Note: This product is for in vitro research use only and is not intended for use in humans or animals.