

## p57 (Acetyl-Lys278) Polyclonal Antibody

Catalog No: #HW130



Package Size: #HW130-1 50ul #HW130-2 100ul

Orders: [order@signalwayantibody.com](mailto:order@signalwayantibody.com)Support: [tech@signalwayantibody.com](mailto:tech@signalwayantibody.com)

## Description

Product Name	p57 (Acetyl-Lys278) Polyclonal Antibody
Host Species	Rabbit
Clonality	Polyclonal
Purification	The antibody was affinity-purified from rabbit antiserum by affinity-chromatography using epitope-specific immunogen.
Applications	WB ELISA
Species Reactivity	Hu Ms Rt
Specificity	Acetyl-p57 (K278) Polyclonal Antibody detects endogenous levels of p57 protein only when acetylated at K278.
Immunogen Type	peptide
Immunogen Description	Synthesized peptide derived from human p57 around the acetylation site of K278.
Target Name	p57
Modification	Acetyl
Other Names	CDKN1C; KIP2; Cyclin-dependent kinase inhibitor 1C; Cyclin-dependent kinase inhibitor p57; p57Kip2
Accession No.	Swiss-Prot: P49918NCBI Gene ID: 1028
Target Species	human
SDS-PAGE MW	33kd
Concentration	1mg/ml
Formulation	Liquid in PBS containing 50% glycerol, 0.5% BSA and 0.02% sodium azide.
Storage	Store at -20°C/1 year

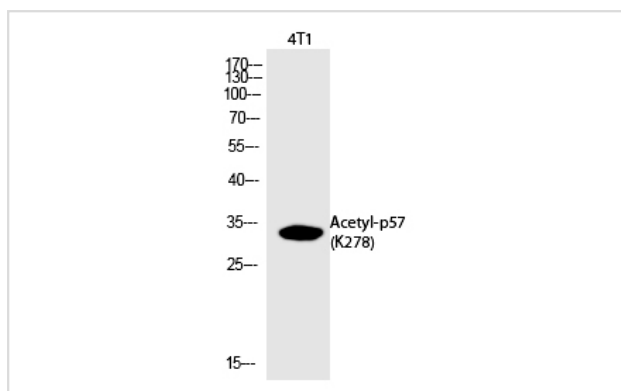
## Application Details

Western blotting: 1/500 - 1/2000

ELISA: 1/20000

Not yet tested in other applications

## Images



Western Blot analysis of 4T1 cells using Acetyl-p57 (K278) Polyclonal Antibody

---

Note: This product is for in vitro research use only and is not intended for use in humans or animals.