

# Ub (Acetyl-Lys33) Polyclonal Antibody

Catalog No: #HW140

Package Size: #HW140-1 50ul #HW140-2 100ul

Orders: [order@signalwayantibody.com](mailto:order@signalwayantibody.com)Support: [tech@signalwayantibody.com](mailto:tech@signalwayantibody.com)

## Description

Product Name	Ub (Acetyl-Lys33) Polyclonal Antibody
Host Species	Rabbit
Clonality	Polyclonal
Purification	The antibody was affinity-purified from rabbit antiserum by affinity-chromatography using epitope-specific immunogen.
Applications	WB ELISA
Species Reactivity	Hu Ms Rt
Specificity	Acetyl-Ub (K33) Polyclonal AntibodySynthesized peptide derived from the human Ub around the acetylation site of K33.
Immunogen Type	peptide
Immunogen Description	Synthesized peptide derived from the human Ub around the acetylation site of K33.
Target Name	Ub
Modification	Acetyl
Other Names	UBB; Polyubiquitin-B; UBC; Polyubiquitin-C; RPS27A; UBA80; UBCEP1; Ubiquitin-40S ribosomal protein S27a; Ubiquitin carboxyl extension protein 80; UBA52; UBCEP2; Ubiquitin-60S ribosomal protein L40; CEP52; Ubiquitin A-52 residue ribosomal protein fusion pr
Accession No.	Swiss-Prot: P62987/P62979/P0CG47/P0CG48NCBI Gene ID:
Target Species	human
SDS-PAGE MW	80kd
Concentration	1mg/ml
Formulation	Liquid in PBS containing 50% glycerol, 0.5% BSA and 0.02% sodium azide.
Storage	Store at -20°C/1 year

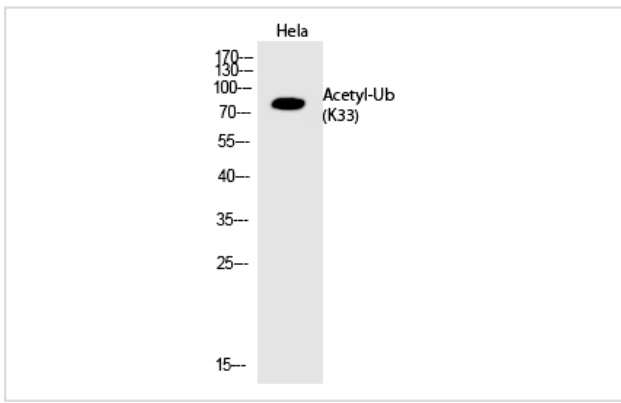
## Application Details

Western blotting: 1/500 - 1/2000

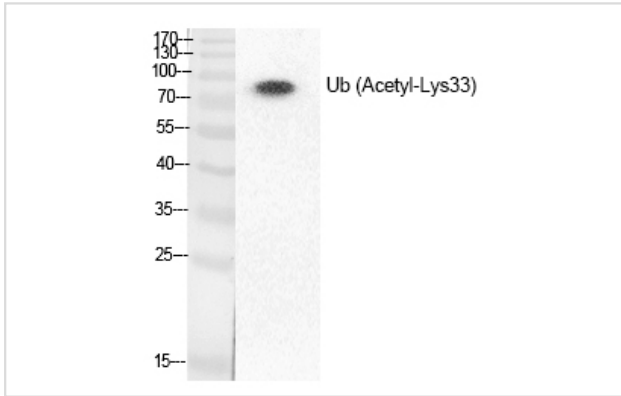
ELISA: 1/20000

Not yet tested in other applications

## Images



Western Blot analysis of HeLa cells using Acetyl-Ub (K33)  
Polyclonal Antibody



Western Blot analysis of HeLa cells using Acetyl-Ub (K33)  
Polyclonal Antibody

---

Note: This product is for in vitro research use only and is not intended for use in humans or animals.