

## HER2 Monoclonal Antibody

Catalog No: #40419

Package Size: #40419-1 50ul #40419-2 100ul

Orders: [order@signalwayantibody.com](mailto:order@signalwayantibody.com)Support: [tech@signalwayantibody.com](mailto:tech@signalwayantibody.com)

## Description

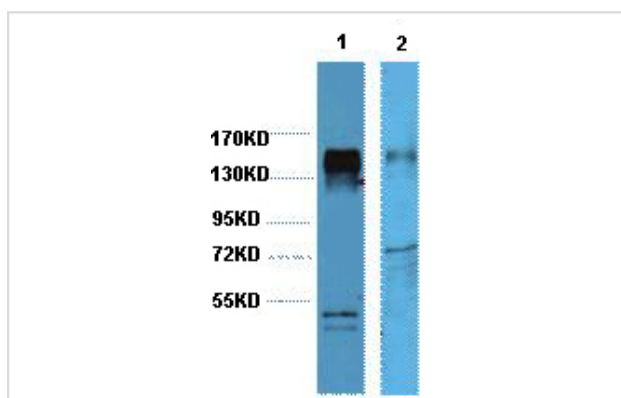
Product Name	HER2 Monoclonal Antibody
Host Species	Mouse
Clonality	Monoclonal
Purification	The antibody was affinity-purified from antiserum by affinity-chromatography
Applications	WB IHC
Species Reactivity	Hu Ms Rt
Specificity	The antibody detects endogenous ErbB-2/HER-2 proteins.
Target Name	HER2
Other Names	ERBB2; HER2; MLN19; NEU; NGL; Receptor tyrosine-protein kinase erbB-2; Metastatic lymph node gene 19 protein; MLN 19; Proto-oncogene Neu; Proto-oncogene c-ErbB-2; Tyrosine kinase-type cell surface receptor HER2; p185erbB2; CD340
Accession No.	Swiss-Prot: P04626NCBI Gene ID: 2064
SDS-PAGE MW	138kd
Concentration	1mg/ml
Formulation	Liquid in PBS containing 50% glycerol, 0.5% BSA and 0.02% sodium azide.
Storage	Store at -20°C/1 year

## Application Details

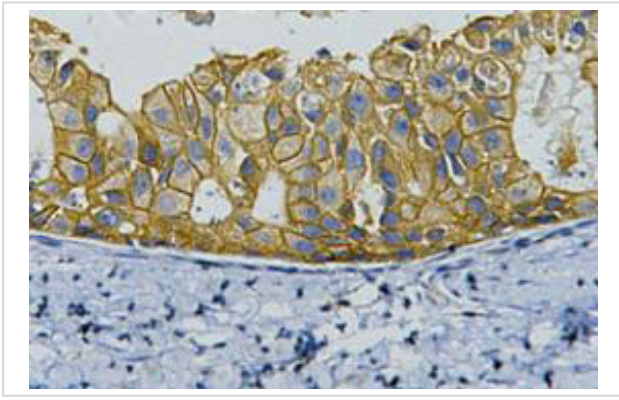
Western blotting: 1:2000-4000

Immunohistochemistry: 1:200

## Images



Western blot analysis of 1) Hela, 2) Mouse Brain, diluted at 1:4000.



IHC staining of human breast cancer tissue, diluted at 1:200.

---

Note: This product is for in vitro research use only and is not intended for use in humans or animals.