

Catenin- $\beta$  Monoclonal Antibody

Catalog No: #40487

Package Size: #40487-1 50ul #40487-2 100ul

Orders: [order@signalwayantibody.com](mailto:order@signalwayantibody.com)Support: [tech@signalwayantibody.com](mailto:tech@signalwayantibody.com)

## Description

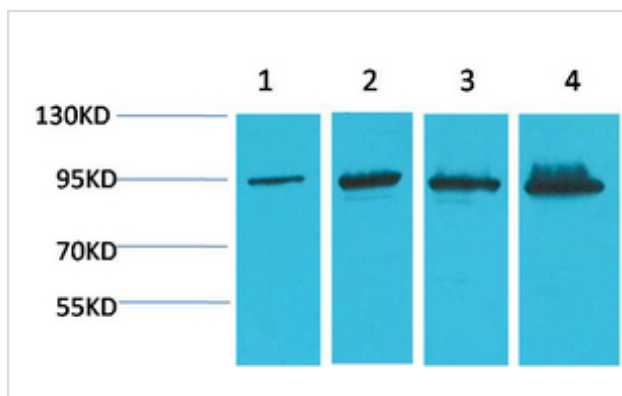
Product Name	Catenin- $\beta$ Monoclonal Antibody
Host Species	Mouse
Clonality	Monoclonal
Purification	The antibody was affinity-purified from antiserum by affinity-chromatography
Applications	WB IHC
Species Reactivity	Hu Ms Rt
Specificity	The antibody detects endogenous Catenin- $\beta$ protein.
Immunogen Type	Recombinant Protein
Immunogen Description	Recombinant Protein
Target Name	Catenin- $\beta$
Accession No.	Swiss-Prot: P35222NCBI Gene ID: 1499
SDS-PAGE MW	92kd
Concentration	1mg/ml
Formulation	Liquid in PBS containing 50% glycerol, 0.5% BSA and 0.02% sodium azide.
Storage	Store at -20°C/1 year

## Application Details

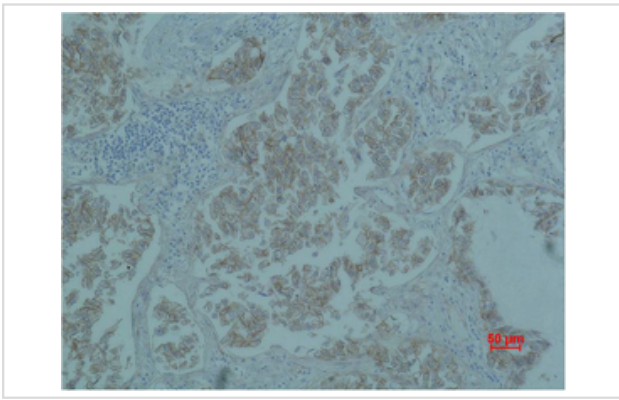
Western blotting: 1:1000-2000

Immunohistochemistry: 1:200-500

## Images



Western blot analysis of 1) HeLa, 2) 293T, 3) Mouse Liver Tissue, 4) Rat Liver Tissue using Catenin- $\beta$  Monoclonal Antibody.



Immunohistochemical analysis of paraffin-embedded Human Lung carcinoma using Catenin- $\beta$  Monoclonal Antibody.

---

Note: This product is for in vitro research use only and is not intended for use in humans or animals.