

## Bovine Serum Albumin Monoclonal Antibody

Catalog No: #40492



Package Size: #40492-1 50ul #40492-2 100ul

Orders: [order@signalwayantibody.com](mailto:order@signalwayantibody.com)Support: [tech@signalwayantibody.com](mailto:tech@signalwayantibody.com)

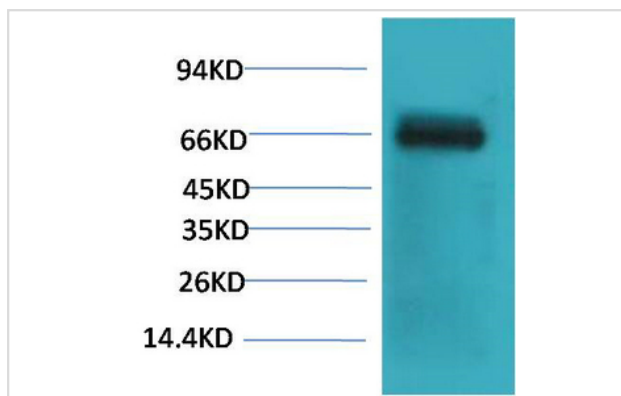
## Description

Product Name	Bovine Serum Albumin Monoclonal Antibody
Host Species	Mouse
Clonality	Monoclonal
Purification	The antibody was affinity-purified from antiserum by affinity-chromatography
Applications	WB
Species Reactivity	Cow
Specificity	The antibody detects endogenous Bovine Serum Albumin protein.
Immunogen Type	Protein
Immunogen Description	Purified Protein
Target Name	Bovine Serum Albumin
SDS-PAGE MW	66kd
Concentration	1mg/ml
Formulation	Liquid in PBS containing 50% glycerol, 0.5% BSA and 0.02% sodium azide.
Storage	Store at -20°C/1 year

## Application Details

Western blotting: 1:1000-2000

## Images



Western blot analysis of Bovine Serum Albumin using Bovine Serum Albumin Monoclonal Antibody.

Note: This product is for in vitro research use only and is not intended for use in humans or animals.