

Rabbit IgG (H+L) Monoclonal Antibody

Catalog No: #40496



Package Size: #40496-1 50ul #40496-2 100ul

Orders: order@signalwayantibody.comSupport: tech@signalwayantibody.com

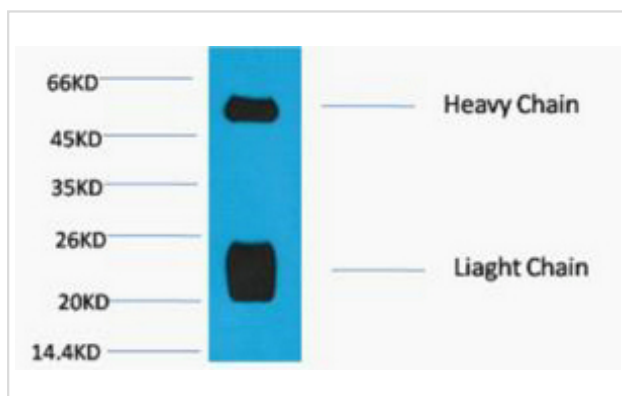
Description

Product Name	Rabbit IgG (H+L) Monoclonal Antibody
Host Species	Mouse
Clonality	Monoclonal
Purification	The antibody was affinity-purified from antiserum by affinity-chromatography
Applications	WB
Species Reactivity	Rt
Specificity	The antibody reacts with whole molecule rabbit IgG. The antibody may cross-react with immunoglobulins from other species.
SDS-PAGE MW	25,55kd
Concentration	1mg/ml
Formulation	Liquid in PBS containing 50% glycerol, 0.5% BSA and 0.02% sodium azide.
Storage	Store at -20°C/1 year

Application Details

Western blotting: 1:2000-5000

Images



Western blot analysis of Reduced Rabbit IgG, H+L, diluted at 1:10000.

Note: This product is for in vitro research use only and is not intended for use in humans or animals.