

Caspase-3 Polyclonal Antibody

Catalog No: #40507



Package Size: #40507-1 50ul #40507-2 100ul

Orders: order@signalwayantibody.comSupport: tech@signalwayantibody.com

Description

Product Name	Caspase-3 Polyclonal Antibody
Host Species	Rabbit
Clonality	Polyclonal
Purification	The antibody was affinity-purified from rabbit antiserum by affinity-chromatography using epitope-specific immunogen.
Applications	WB ELISA
Species Reactivity	Hu Mk
Specificity	Caspase-3 Polyclonal Antibody detects endogenous levels of Caspase-3 protein.
Immunogen Type	peptide
Immunogen Description	Synthesized peptide derived from the N-terminal region of human Caspase-3.
Target Name	Caspase-3
Other Names	CASP3; CPP32; Caspase-3; CASP-3; Apopain; Cysteine protease CPP32; CPP-32; Protein Yama; SREBP cleavage activity 1; SCA-1
Accession No.	Swiss-Prot: P42574NCBI Gene ID: 836
SDS-PAGE MW	32kd
Concentration	1mg/ml
Formulation	Liquid in PBS containing 50% glycerol, 0.5% BSA and 0.02% sodium azide.
Storage	Store at -20°C/1 year

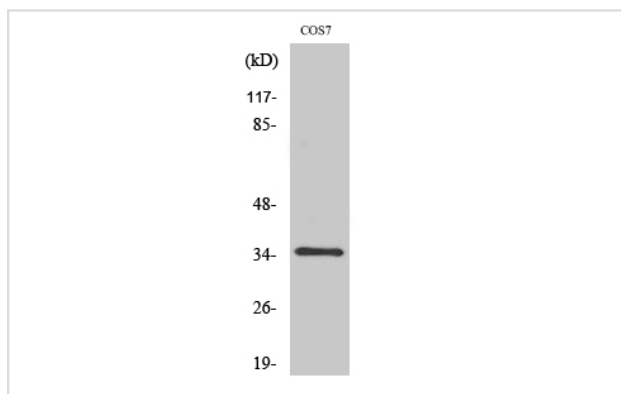
Application Details

Western Blot: 1/500 - 1/2000.

ELISA: 1/40000.

Not yet tested in other applications.

Images



Western Blot analysis of COS7 cells using Caspase-3 Polyclonal Antibody

Published Papers

el et al., The midregion, nuclear localization sequence, and C terminus of PTHrP regulate skeletal development, hematopoiesis, and survival in mice. In FASEB J on 2010 Jun by Toribio RE, Brown HA, et al.. PMID:20145205, , (2010)

[PMID:20145205](#)

Note: This product is for in vitro research use only and is not intended for use in humans or animals.