

Cleaved-Notch 2 (D1733) Polyclonal Antibody

Catalog No: #40517

Package Size: #40517-1 50ul #40517-2 100ul

Orders: order@signalwayantibody.comSupport: tech@signalwayantibody.com

Description

Product Name	Cleaved-Notch 2 (D1733) Polyclonal Antibody
Host Species	Rabbit
Clonality	Polyclonal
Purification	The antibody was affinity-purified from rabbit antiserum by affinity-chromatography using epitope-specific immunogen.
Applications	WB IHC ELISA
Species Reactivity	Hu Ms Rt
Specificity	Cleaved-Notch 2 (D1733) Polyclonal Antibody detects endogenous levels of fragment of activated Notch 2 protein resulting from cleavage adjacent to D1733.
Immunogen Type	peptide
Immunogen Description	Synthesized peptide derived from the Internal region of human Notch 2.
Target Name	Cleaved-Notch 2
Other Names	NOTCH2; Neurogenic locus notch homolog protein 2; Notch 2; hN2
Accession No.	Swiss-Prot: Q04721NCBI Gene ID: 4853
SDS-PAGE MW	100+130kd
Concentration	1mg/ml
Formulation	Liquid in PBS containing 50% glycerol, 0.5% BSA and 0.02% sodium azide.
Storage	Store at -20°C/1 year

Application Details

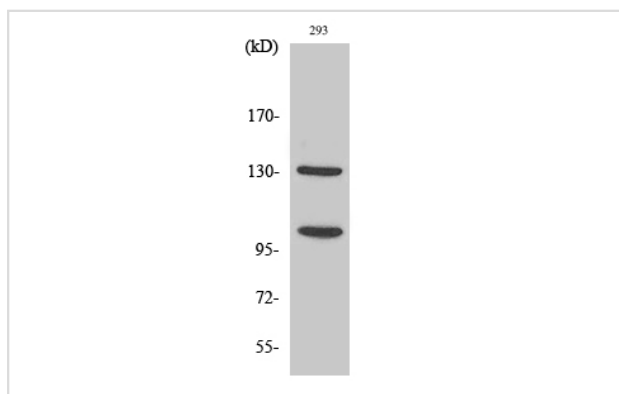
Western Blot: 1/500 - 1/2000.

Immunohistochemistry: 1/100 - 1/300.

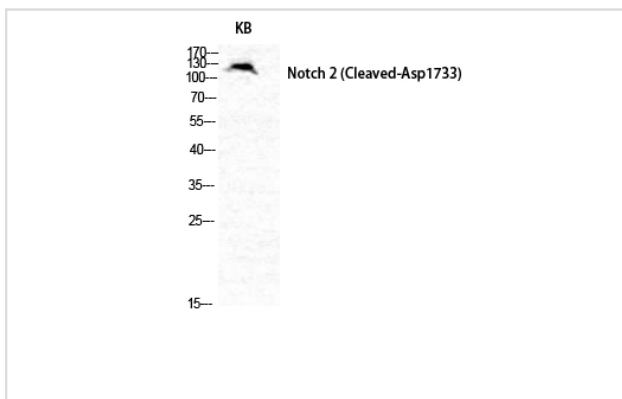
ELISA: 1/40000.

Not yet tested in other applications.

Images



Western Blot analysis of 293 cells using Cleaved-Notch 2 (D1733) Polyclonal Antibody



Western Blot analysis of KB cells using Cleaved-Notch 2 (D1733) Polyclonal Antibody

Published Papers

el at., Role of Jagged1/STAT3 signalling In platinum-resistant ovarian cancer. In J Cell Mol Med on 2019 Jun by Yang J, Xing H, et al..PMID: 30993885, , (2019)

[PMID:30993885](#)

Note: This product is for in vitro research use only and is not intended for use in humans or animals.