

# Cleaved-PARP-1 (D214) Polyclonal Antibody

Catalog No: #40520

Package Size: #40520-1 50ul #40520-2 100ul

Orders: [order@signalwayantibody.com](mailto:order@signalwayantibody.com)Support: [tech@signalwayantibody.com](mailto:tech@signalwayantibody.com)

## Description

Product Name	Cleaved-PARP-1 (D214) Polyclonal Antibody
Host Species	Rabbit
Clonality	Polyclonal
Purification	The antibody was affinity-purified from rabbit antiserum by affinity-chromatography using epitope-specific immunogen.
Applications	WB ELISA
Species Reactivity	Hu Ms
Specificity	Cleaved-PARP-1 (D214) Polyclonal Antibody detects endogenous levels of fragment of activated PARP-1 protein resulting from cleavage adjacent to D214.
Immunogen Type	peptide
Immunogen Description	Synthesized peptide derived from the Internal region of human PARP-1.
Target Name	Cleaved-PARP-1
Other Names	PARP1; ADPRT; PPOL; Poly [ADP-ribose] polymerase 1; PARP-1; ADP-ribosyltransferase diphtheria toxin-like 1; ARTD1; NAD(+) ADP-ribosyltransferase 1; ADPRT 1; Poly[ADP-ribose] synthase 1
Accession No.	Swiss-Prot: P09874NCBI Gene ID: 142
SDS-PAGE MW	24kd
Concentration	1mg/ml
Formulation	Liquid in PBS containing 50% glycerol, 0.5% BSA and 0.02% sodium azide.
Storage	Store at -20°C/1 year

## Application Details

Western Blot: 1/500 - 1/2000.

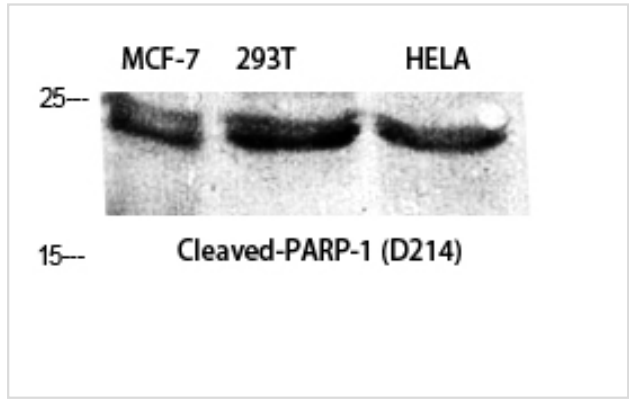
ELISA: 1/20000.

Not yet tested in other applications.

## Images



Western Blot analysis of A549 cells using Cleaved-PARP-1 (D214) Polyclonal Antibody



Western Blot analysis of MCF7 293T HELA cells using  
Cleaved-PARP-1 (D214) Polyclonal Antibody

Published Papers

el at., CD155 Cooperates with PD-1/PD-L1 to Promote Proliferation of Esophageal Squamous Cancer Cells via PI3K/Akt and MAPK Signaling Pathways. In Cancers (Basel) on 2022 Nov 15 by Xiyang Tan, Jie Yang, et al..PMID:36428703, , (2022)  
[PMID:36428703](#)

Note: This product is for in vitro research use only and is not intended for use in humans or animals.