

## Ataxin-2 Polyclonal Antibody

Catalog No: #40622

Package Size: #40622-1 50ul #40622-2 100ul

Orders: [order@signalwayantibody.com](mailto:order@signalwayantibody.com)Support: [tech@signalwayantibody.com](mailto:tech@signalwayantibody.com)

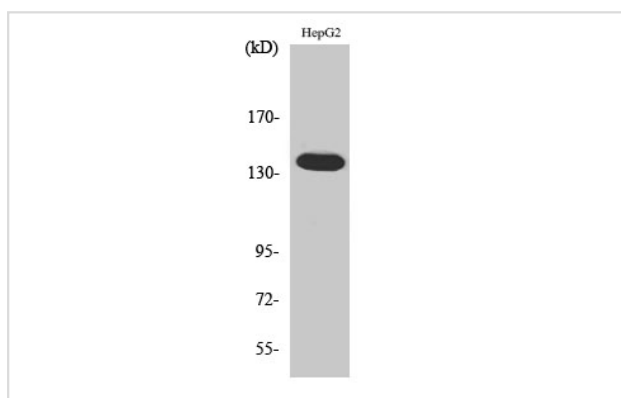
## Description

Product Name	Ataxin-2 Polyclonal Antibody
Host Species	Rabbit
Clonality	Polyclonal
Purification	The antibody was affinity-purified from rabbit antiserum by affinity-chromatography using epitope-specific immunogen.
Applications	WB;IHC;IFoO ELISA
Species Reactivity	Human;Mouse
Specificity	Ataxin-2 Polyclonal Antibody detects endogenous levels of Ataxin-2 protein.
Immunogen Description	The antiserum was produced against synthesized peptide derived from human ATXN2. AA range:731-780
Target Name	Ataxin-2
Other Names	ATXN2; ATX2; SCA2; TNRC13; Ataxin-2; Spinocerebellar ataxia type 2 protein; Trinucleotide repeat-containing gene 13 protein
Accession No.	Swiss-Prot: Q99700NCBI Gene ID: 6311
SDS-PAGE MW	140kd
Concentration	1mg/ml
Formulation	Liquid in PBS containing 50% glycerol, 0.5% BSA and 0.02% sodium azide.
Storage	Store at -20°C/1 year

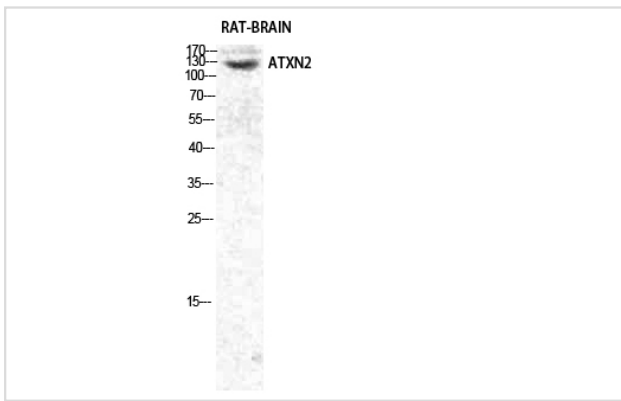
## Application Details

WB 1:500 - 1:2000. IHC 1:100 - 1:300. IF 1:50-200

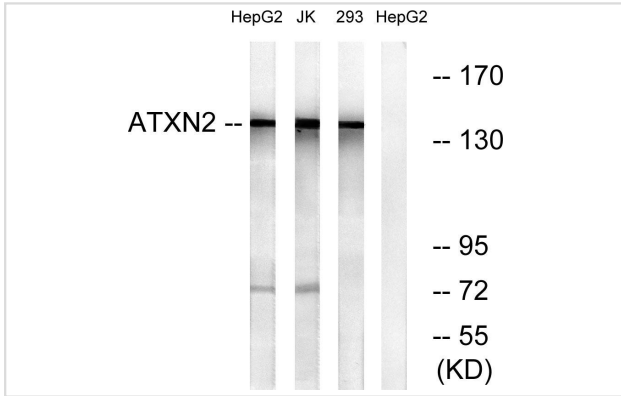
## Images



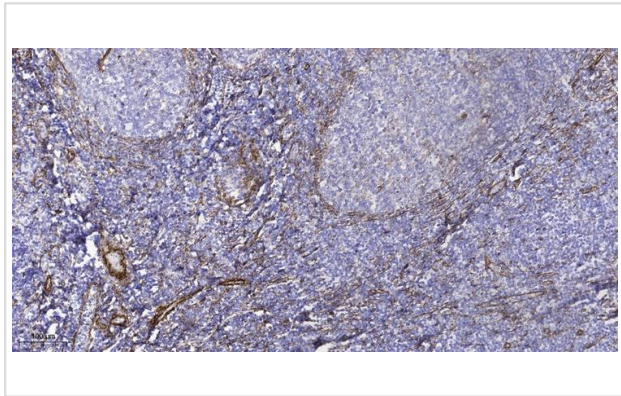
Western Blot analysis of 293 cells using Ataxin-2 Polyclonal Antibody



Western Blot analysis of RAT-BRAIN cells using Ataxin-2 Polyclonal Antibody



Western blot analysis of lysates from HepG2, Jurkat, and 293 cells, using ATXN2 Antibody. The lane on the right is blocked with the synthesized peptide.



Immunohistochemical analysis of paraffin-embedded human tonsil. 1, Tris-EDTA, pH9.0 was used for antigen retrieval. 2 Antibody was diluted at 1:200 (4° overnight). 3, Secondary antibody was diluted at 1:200 (room temperature, 45min).

Note: This product is for in vitro research use only and is not intended for use in humans or animals.