

## VAPA antibody

Catalog No: #22585



Orders: order@signalwayantibody.com

Support: tech@signalwayantibody.com

## Description

Product Name	VAPA antibody
Host Species	Rabbit
Clonality	Polyclonal
Purification	Purified by antigen-affinity chromatography.
Applications	WB IHC
Species Reactivity	Hu Ms
Immunogen Type	Peptide
Immunogen Description	Synthetic peptide contain a sequence corresponding to a region within amino acids 29 and 92 of VAPA
Target Name	VAPA
Accession No.	NCBI Gene ID: 9218NCBI mRNA#: NM_194434NCBI Protein#: NP_919415
Concentration	1mg/ml
Formulation	Supplied in 0.1M Tris-buffered saline with 10% Glycerol (pH7.0). 0.01% Thimerosal was added as a preservative.
Storage	Store at -20°C for long term preservation (recommended). Store at 4°C for short term use.

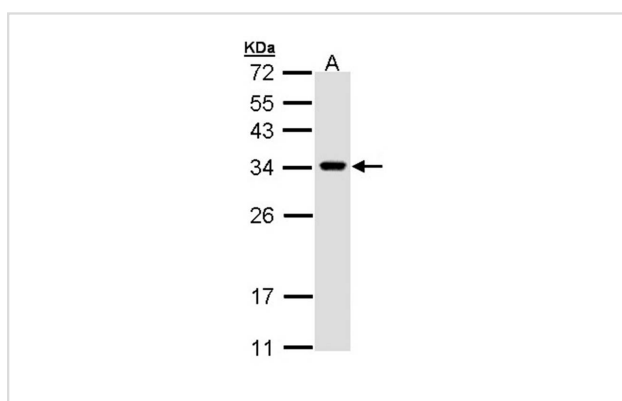
## Application Details

Predicted MW: 28kd

Western blotting: 1:500-1:3000

Immunohistochemistry: 1:50-1:500

## Images

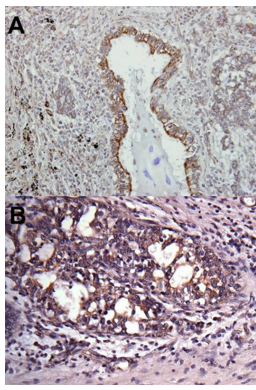


Sample (30 ug of whole cell lysate)

A: H1299

12% SDS PAGE

Primary antibody diluted at 1: 1000



A:Immunohistochemical analysis of paraffin-embedded lung AdCA, using VAPA antibody at 1: 500 dilution.

B:Immunohistochemical analysis of paraffin-embedded breast ca, using VAPA antibody at 1: 500 dilution.

## Background

The protein encoded by this gene is a type IV membrane protein. It is present in the plasma membrane and intracellular vesicles. It may also be associated with the cytoskeleton. This protein may function in vesicle trafficking, membrane fusion, protein complex assembly and cell motility. Alternative splicing occurs at this locus and two transcript variants encoding distinct isoforms have been identified. [provided by RefSeq]

Note: This product is for in vitro research use only and is not intended for use in humans or animals.