

## CD31 Polyclonal Antibody

Catalog No: #40699

Package Size: #40699-1 50ul #40699-2 100ul

Orders: order@signalwayantibody.com

Support: tech@signalwayantibody.com

## Description

Product Name	CD31 Polyclonal Antibody
Host Species	Rabbit
Clonality	Polyclonal
Purification	The antibody was affinity-purified from rabbit antiserum by affinity-chromatography using epitope-specific immunogen.
Applications	WB IHC IF ELISA
Species Reactivity	Hu Ms
Specificity	CD31 Polyclonal Antibody detects endogenous levels of CD31 protein.
Immunogen Description	Synthesized peptide derived from human CD31 around the non-phosphorylation site of Y713.
Target Name	CD31
Other Names	PECAM1; Platelet endothelial cell adhesion molecule; PECAM-1; EndoCAM; GPIIA'; PECA1; CD antigen CD31
Accession No.	Swiss-Prot: P16284NCBI Gene ID: 5175
SDS-PAGE MW	82kd
Concentration	1mg/ml
Formulation	Liquid in PBS containing 50% glycerol, 0.5% BSA and 0.02% sodium azide.
Storage	Store at -20°C/1 year

## Application Details

Western Blot: 1/500 - 1/2000.

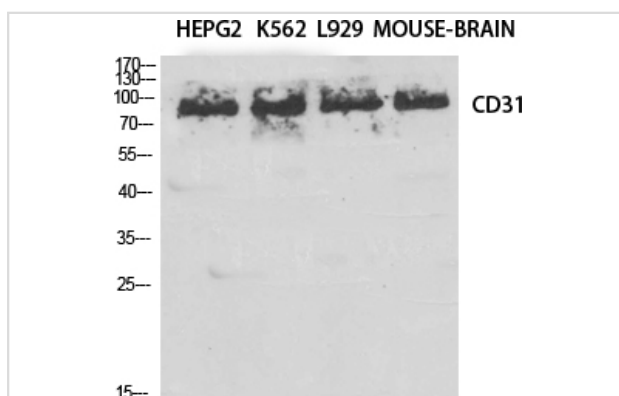
Immunohistochemistry: 1/100 - 1/300.

Immunofluorescence: 1/200 - 1/1000.

ELISA: 1/20000.

Not yet tested in other applications.

## Images



Western Blot analysis of HepG2 K562 L929 MOUSE-BRAIN PC-3 cells using CD31 Polyclonal Antibody

---

Note: This product is for in vitro research use only and is not intended for use in humans or animals.