

## alpha Actinin 4 antibody

Catalog No: #22593

Orders: order@signalwayantibody.com

Support: tech@signalwayantibody.com

## Description

Product Name	alpha Actinin 4 antibody
Host Species	Rabbit
Clonality	Polyclonal
Purification	Purified by antigen-affinity chromatography.
Applications	WB IHC IF
Species Reactivity	Hu
Immunogen Type	Recombinant protein
Immunogen Description	Recombinant protein fragment contain a sequence corresponding to a region within amino acids 206 and 512 of alpha Actinin 4
Target Name	alpha Actinin 4
Accession No.	NCBI Gene ID: 81NCBI mRNA#: BC005033NCBI Protein#: AAH05033
Concentration	1mg/ml
Formulation	Supplied in 0.1M Tris-buffered saline with 10% Glycerol (pH7.0). 0.01% Thimerosal was added as a preservative.
Storage	Store at -20°C for long term preservation (recommended). Store at 4°C for short term use.

## Application Details

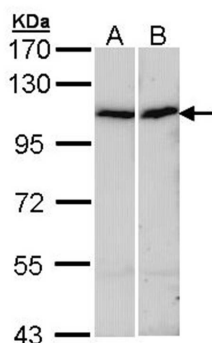
Predicted MW: 105kd

Western blotting: 1:500-1:3000

Immunohistochemistry: 1:100-1:500

Immunofluorescence: 1:100-1:200

## Images



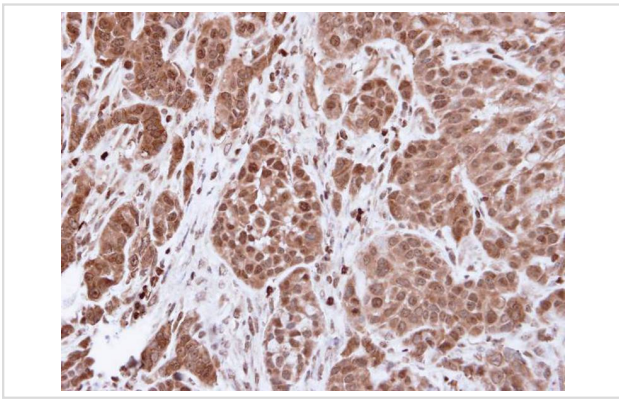
Sample (30 ug of whole cell lysate)

A: A431

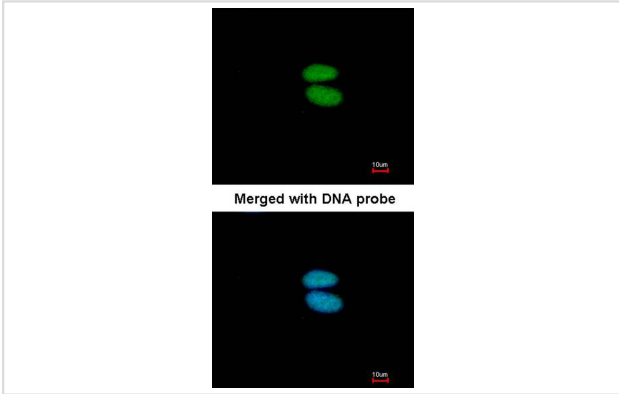
B: Hep G2

7.5% SDS PAGE

Primary antibody diluted at 1: 1000



Immunohistochemical analysis of paraffin-embedded A549 xenograft, using alpha Actinin 4 antibody at 1: 500 dilution.



Immunofluorescence analysis of paraformaldehyde-fixed HeLa, using alpha Actinin 4 antibody at 1: 200 dilution.

## Background

Alpha actinins belong to the spectrin gene superfamily which represents a diverse group of cytoskeletal proteins, including the alpha and beta spectrins and dystrophins. Alpha actinin is an actin-binding protein with multiple roles in different cell types. In nonmuscle cells, the cytoskeletal isoform is found along microfilament bundles and adherens-type junctions, where it is involved in binding actin to the membrane. In contrast, skeletal, cardiac, and smooth muscle isoforms are localized to the Z-disc and analogous dense bodies, where they help anchor the myofibrillar actin filaments. This gene encodes a nonmuscle, alpha actinin isoform which is concentrated in the cytoplasm, and thought to be involved in metastatic processes. Mutations in this gene have been associated with focal and segmental glomerulosclerosis. [provided by RefSeq]

Note: This product is for in vitro research use only and is not intended for use in humans or animals.