

Cdk1/Cdc2 Polyclonal Antibody

Catalog No: #40717



Package Size: #40717-1 50ul #40717-2 100ul

Orders: order@signalwayantibody.comSupport: tech@signalwayantibody.com

Description

Product Name	Cdk1/Cdc2 Polyclonal Antibody
Host Species	Rabbit
Clonality	Polyclonal
Purification	The antibody was affinity-purified from rabbit antiserum by affinity-chromatography using epitope-specific immunogen.
Applications	WB IHC IF ELISA
Species Reactivity	Hu Ms Rt
Specificity	Cdk1/Cdc2 Polyclonal Antibody detects endogenous levels of Cdk1/Cdc2 protein.
Immunogen Type	peptide
Immunogen Description	Synthesized peptide derived from the Internal region of human Cdk1/Cdc2.
Target Name	Cdk1/Cdc2
Other Names	CDK1; CDC2; CDC28A; CDKN1; P34CDC2; Cyclin-dependent kinase 1; CDK1; Cell division control protein 2 homolog; Cell division protein kinase 1; p34 protein kinase
Accession No.	Swiss-Prot: P06493NCBI Gene ID: 983
SDS-PAGE MW	34kd
Concentration	1mg/ml
Formulation	Liquid in PBS containing 50% glycerol, 0.5% BSA and 0.02% sodium azide.
Storage	Store at -20°C/1 year

Application Details

Western Blot: 1/500 - 1/2000.

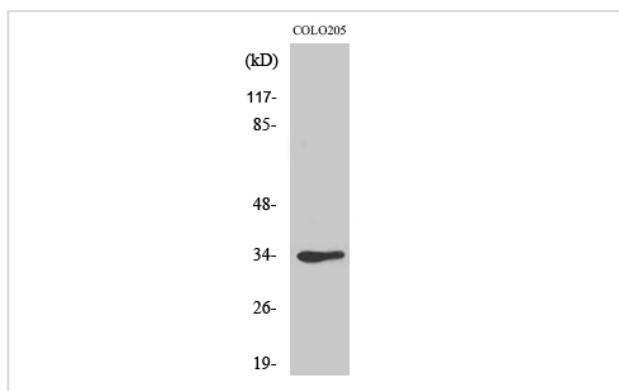
Immunohistochemistry: 1/100 - 1/300.

Immunofluorescence: 1/200 - 1/1000.

ELISA: 1/20000.

Not yet tested in other applications.

Images



Western Blot analysis of Jurkat cells using Cdk1/Cdc2 Polyclonal Antibody

Published Papers

el et al., Jaridonin-induced G2/M Phase Arrest in Human Esophageal Cancer Cells Is Caused by Reactive Oxygen Species-Dependent Cdc2-tyr15 Phosphorylation via ATM-Chk1/2-Cdc25C Pathway .In Toxicol Appl Pharmacol on 2015 Jan 15 by Yong-Cheng Ma , Nan Su et al..PMID:25450480, , (2015)

[PMID:25450480](#)

Note: This product is for in vitro research use only and is not intended for use in humans or animals.