

## COL1A2 Polyclonal Antibody

Catalog No: #40771



Package Size: #40771-1 50ul #40771-2 100ul

Orders: [order@signalwayantibody.com](mailto:order@signalwayantibody.com)Support: [tech@signalwayantibody.com](mailto:tech@signalwayantibody.com)

## Description

Product Name	COL1A2 Polyclonal Antibody
Host Species	Rabbit
Clonality	Polyclonal
Purification	The antibody was affinity-purified from rabbit antiserum by affinity-chromatography using epitope-specific immunogen.
Applications	WB IHC IF ELISA
Species Reactivity	Hu Ms Rt
Specificity	COL1A2 Polyclonal Antibody detects endogenous levels of COL1A2 protein.
Immunogen Type	peptide
Immunogen Description	Synthesized peptide derived from the N-terminal region of human COL1A2.
Target Name	COL1A2
Other Names	COL1A2; Collagen alpha-2(I) chain; Alpha-2 type I collagen
Accession No.	Swiss-Prot: P08123NCBI Gene ID: 1278
SDS-PAGE MW	200kd
Concentration	1mg/ml
Formulation	Liquid in PBS containing 50% glycerol, 0.5% BSA and 0.02% sodium azide.
Storage	Store at -20°C/1 year

## Application Details

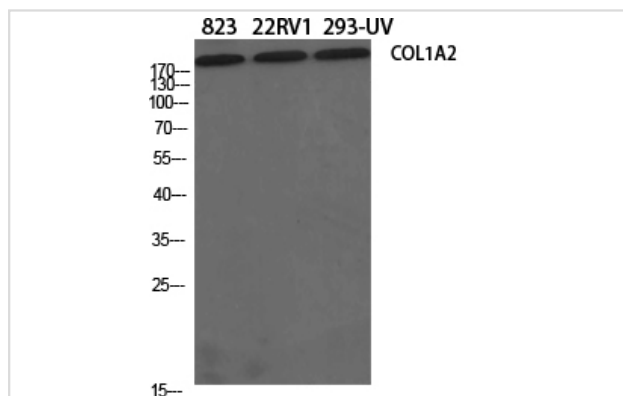
Western Blot: 1:500-2000

Immunohistochemistry: 1/100 - 1/300

Immunofluorescence: 1/200 - 1/1000

ELISA: 1/10000

## Images



Western Blot analysis of 823 22RV1 293-UV cells using COL1A2 Polyclonal Antibody

## Published Papers

---

el at., Three-Dimensional Culture Promotes Secretion of Extracellular Matrix Structure Fat Flap with Lipoaspirates in Vitro. In Tissue Eng Part A  
on 2022 Nov by Jing Zhao, Xin Bi,et al..PMID: 36017621, , (2022)

[PMID:36017621](#)

---

---

Note: This product is for in vitro research use only and is not intended for use in humans or animals.