

c-Src Polyclonal Antibody

Catalog No: #40790



Package Size: #40790-1 50ul #40790-2 100ul

Orders: order@signalwayantibody.comSupport: tech@signalwayantibody.com

Description

Product Name	c-Src Polyclonal Antibody
Host Species	Rabbit
Clonality	Polyclonal
Purification	The antibody was affinity-purified from rabbit antiserum by affinity-chromatography using epitope-specific immunogen.
Applications	WB IHC IF ELISA
Species Reactivity	Hu Ms Rt
Specificity	c-Src Polyclonal Antibody detects endogenous levels of c-Src protein.
Immunogen Description	Synthesized peptide derived from human c-Src around the non-phosphorylation site of Y419.
Target Name	c-Src
Other Names	SRC; SRC1; Proto-oncogene tyrosine-protein kinase Src; Proto-oncogene c-Src; pp60c-src; p60-Src
Accession No.	Swiss-Prot: P12931NCBI Gene ID: 6714
SDS-PAGE MW	60kd
Concentration	1mg/ml
Formulation	Liquid in PBS containing 50% glycerol, 0.5% BSA and 0.02% sodium azide.
Storage	Store at -20°C/1 year

Application Details

Western Blot: 1/500 - 1/2000.

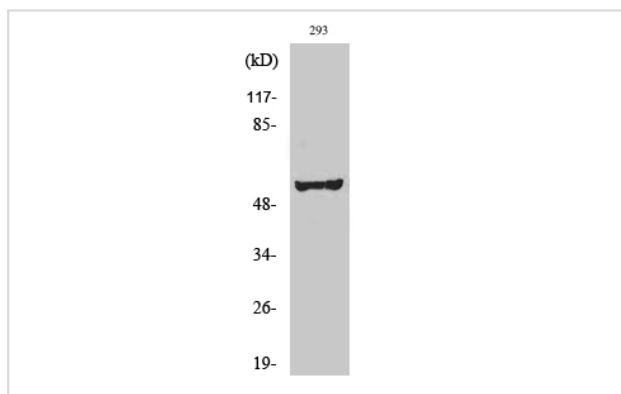
Immunohistochemistry: 1/100 - 1/300.

Immunofluorescence: 1/200 - 1/1000.

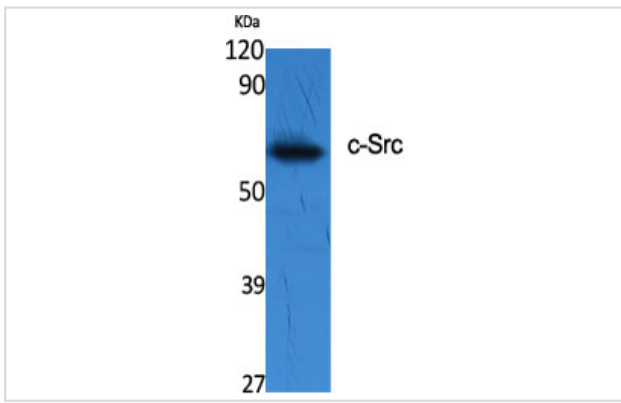
ELISA: 1/40000.

Not yet tested in other applications.

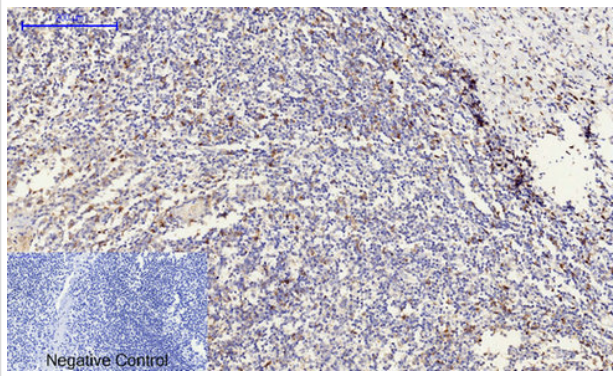
Images



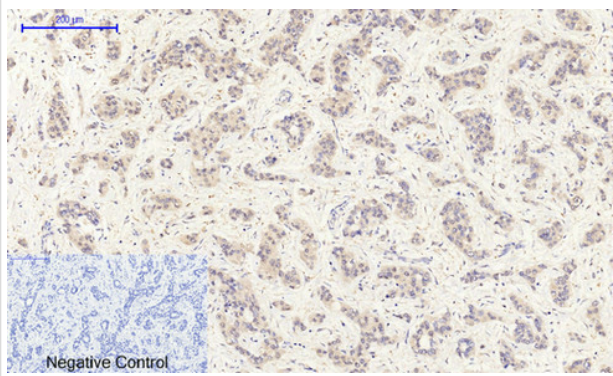
Western Blot analysis of 293 cells using c-Src Polyclonal Antibody



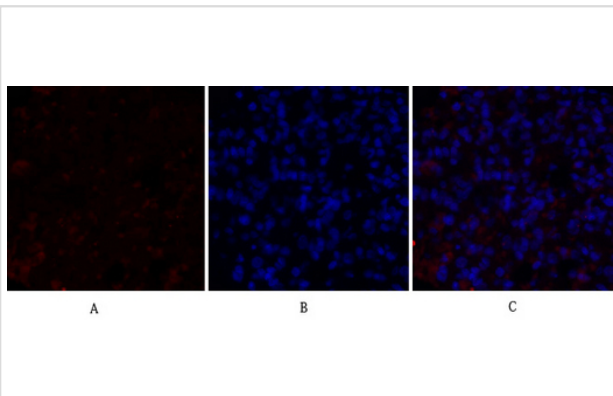
Western Blot analysis of various cells using c-Src Polyclonal Antibody



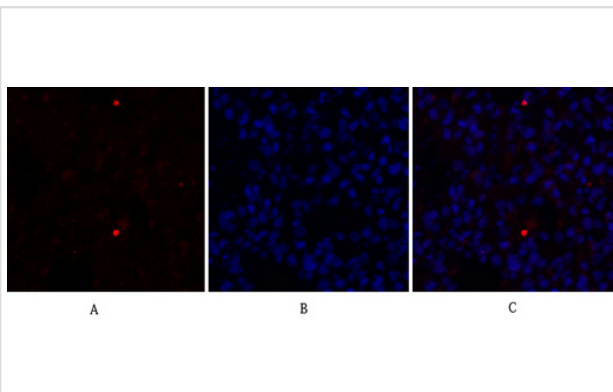
Immunohistochemical analysis of paraffin-embedded Human-Tonsil tissue. 1,c-Src Polyclonal Antibody was diluted at 1:200(4°C,overnight). 2, Sodium citrate pH 6.0 was used for antibody retrieval(>98°C,20min). 3,Secondary antibody was diluted at 1:200(room tempeRature, 30min). Negative control was used by secondary antibody only.



Immunohistochemical analysis of paraffin-embedded Human-liver-cancer tissue. 1,c-Src Polyclonal Antibody was diluted at 1:200(4°C,overnight). 2, Sodium citrate pH 6.0 was used for antibody retrieval(>98°C,20min). 3,Secondary antibody was diluted at 1:200(room tempeRature, 30min). Negative control was used by secondary antibody only.



Immunofluorescence analysis of rat-lung tissue. 1,c-Src Polyclonal Antibody(red) was diluted at 1:200(4°C,overnight). 2, Cy3 labeled Secondary antibody was diluted at 1:300(room temperature, 50min).3, Picture B: DAPI(blue) 10min. Picture A:Target. Picture B: DAPI. Picture C: merge of A+B



Immunofluorescence analysis of rat-lung tissue. 1,c-Src Polyclonal Antibody(red) was diluted at 1:200(4°C,overnight). 2, Cy3 labeled Secondary antibody was diluted at 1:300(room temperature, 50min).3, Picture B: DAPI(blue) 10min. Picture A:Target. Picture B: DAPI. Picture C: merge of A+B

Published Papers

el at., YAP1 plays a key role of the conversion of normal fibroblasts into cancer-associated fibroblasts that contribute to prostate cancer progression. In J Exp Clin Cancer Res on 2020 Feb 17; by Shen T, Li Y et al..PMID:32066485, , (2020)

[PMID:32066485](#)

el at., A thiazole-derived oridonin analogue exhibits antitumor activity by directly and allosterically inhibiting STAT3. In J Biol Chem on 2019 Nov 15; by Shen X, Zhao L, et al..PMID:31594861, , (2019)

[PMID:31594861](#)

Note: This product is for in vitro research use only and is not intended for use in humans or animals.