

Cyclin A1 Polyclonal Antibody

Catalog No: #40801

Package Size: #40801-1 50ul #40801-2 100ul

Orders: order@signalwayantibody.comSupport: tech@signalwayantibody.com

Description

Product Name	Cyclin A1 Polyclonal Antibody
Host Species	Rabbit
Clonality	Polyclonal
Purification	The antibody was affinity-purified from rabbit antiserum by affinity-chromatography using epitope-specific immunogen.
Applications	WB IHC ELISA
Species Reactivity	Hu Ms Rt
Specificity	Cyclin A1 Polyclonal Antibody detects endogenous levels of Cyclin A1 protein.
Immunogen Type	peptide
Immunogen Description	Synthesized peptide derived from the C-terminal region of human Cyclin A1.
Target Name	Cyclin A1
Other Names	CCNA1; Cyclin-A1
Accession No.	Swiss-Prot: P78396NCBI Gene ID: 8900
SDS-PAGE MW	52kd
Concentration	1mg/ml
Formulation	Liquid in PBS containing 50% glycerol, 0.5% BSA and 0.02% sodium azide.
Storage	Store at -20°C/1 year

Application Details

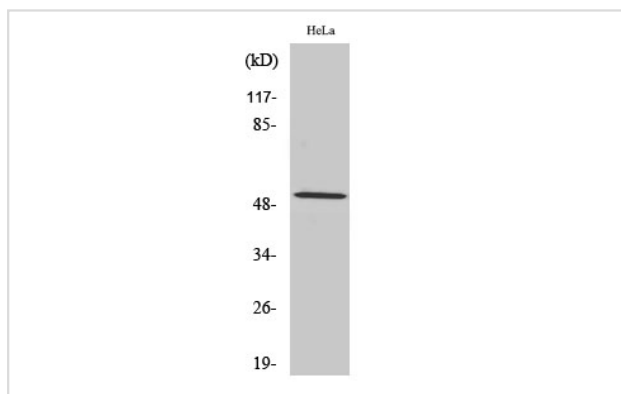
Western Blot: 1/500 - 1/2000.

Immunohistochemistry: 1/100 - 1/300.

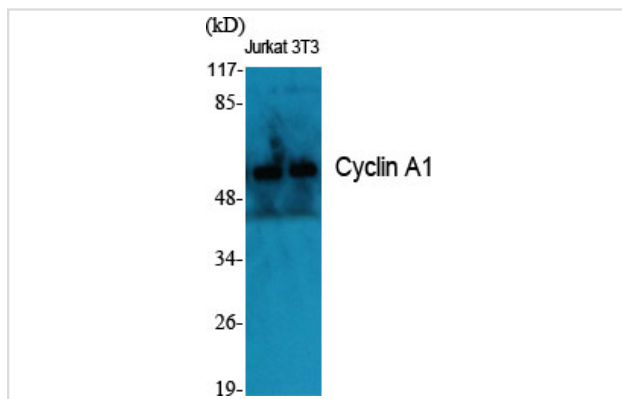
ELISA: 1/40000.

Not yet tested in other applications.

Images



Western Blot analysis of HeLa cells using Cyclin A1 Polyclonal Antibody



Western Blot analysis of Jurkat NIH-3T3 cells using Cyclin A1 Polyclonal Antibody

Published Papers

et al., Bioactive molecule Icaritin Inhibited proliferation while enhanced apoptosis and autophagy of rat airway smooth muscle cells In vitro. In Cytotechnology on 2019 Dec by Yang L, Xiao B, et al..PMID:31583509, , (2019)

[PMID:31583509](#)

et al., 5- ζ -methylimidazole- β -carboxamide ribonucleotide prevents fat gain following the cessation of voluntary physical activity. In Exp Physiol on 2017 Nov 1 by Gregory N Ruegsegger, Joseph A Sevage, et al..PMID: 28786140, , (2017)

[PMID:28786140](#)

Note: This product is for in vitro research use only and is not intended for use in humans or animals.