

## Cyclin E1 Polyclonal Antibody

Catalog No: #40804

Package Size: #40804-1 50ul #40804-2 100ul

Orders: [order@signalwayantibody.com](mailto:order@signalwayantibody.com)Support: [tech@signalwayantibody.com](mailto:tech@signalwayantibody.com)

## Description

Product Name	Cyclin E1 Polyclonal Antibody
Host Species	Rabbit
Clonality	Polyclonal
Purification	The antibody was affinity-purified from rabbit antiserum by affinity-chromatography using epitope-specific immunogen.
Applications	WB IHC IF ELISA
Species Reactivity	Hu Ms Rt
Specificity	Cyclin E1 Polyclonal Antibody detects endogenous levels of Cyclin E1 protein.
Immunogen Type	peptide
Immunogen Description	Synthesized peptide derived from the Internal region of human Cyclin E1.
Target Name	Cyclin E1
Other Names	CCNE1; CCNE; G1/S-specific cyclin-E1
Accession No.	Swiss-Prot: P24864NCBI Gene ID: 898
SDS-PAGE MW	49kd
Concentration	1mg/ml
Formulation	Liquid in PBS containing 50% glycerol, 0.5% BSA and 0.02% sodium azide.
Storage	Store at -20°C/1 year

## Application Details

Western Blot: 1/500 - 1/2000.

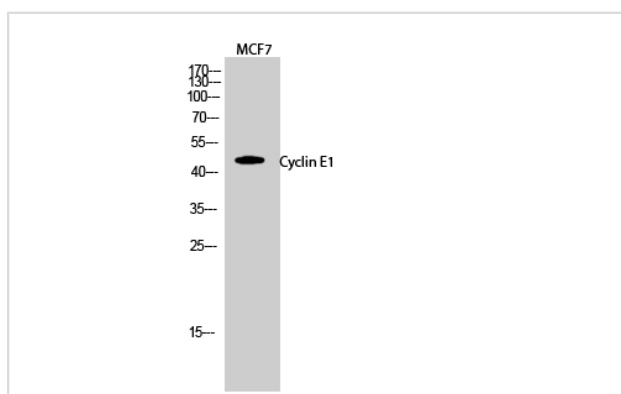
Immunohistochemistry: 1/100 - 1/300.

Immunofluorescence: 1/200 - 1/1000.

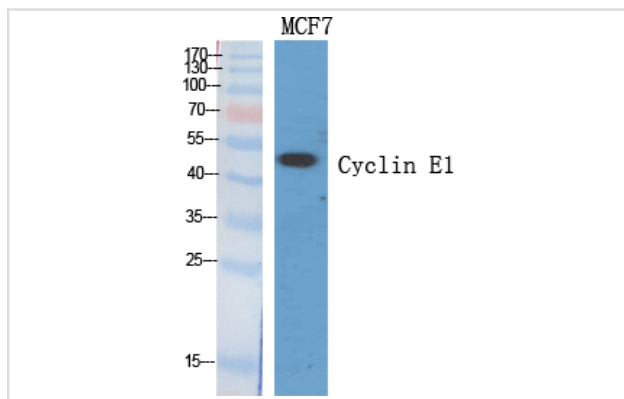
ELISA: 1/20000.

Not yet tested in other applications.

## Images



Western Blot analysis of MCF7 cells using Cyclin E1 Polyclonal Antibody



Western Blot analysis of MCF7 cells using Cyclin E1 Polyclonal Antibody

## Published Papers

el at., HMGB1 released from dead tumor cells after insufficient radiofrequency ablation promotes progression of HCC residual tumor via ERK1/2 pathway In *Int J Hyperthermia On*2023byYingshi Zhou , Xiaodi Liu et al..PMID:36755436, , (2023)

[PMID:36755436](#)

Note: This product is for in vitro research use only and is not intended for use in humans or animals.