

CYP19A1 Polyclonal Antibody

Catalog No: #40809

Package Size: #40809-1 50ul #40809-2 100ul

Orders: order@signalwayantibody.comSupport: tech@signalwayantibody.com

Description

Product Name	CYP19A1 Polyclonal Antibody
Host Species	Rabbit
Clonality	Polyclonal
Purification	The antibody was affinity-purified from rabbit antiserum by affinity-chromatography using epitope-specific immunogen.
Applications	WB IHC IF ELISA
Species Reactivity	Hu Ms Rt
Specificity	CYP19A1 Polyclonal Antibody detects endogenous levels of CYP19A1 protein.
Immunogen Type	peptide
Immunogen Description	Synthesized peptide derived from the Internal region of human CYP19A1.
Target Name	CYP19A1
Other Names	CYP19A1; ARO1; CYAR; CYP19; Cytochrome P450 19A1; Aromatase; CYPXIX; Cytochrome P-450AROM; Estrogen synthase
Accession No.	Swiss-Prot: P11511NCBI Gene ID: 1588
SDS-PAGE MW	53kd
Concentration	1mg/ml
Formulation	Liquid in PBS containing 50% glycerol, 0.5% BSA and 0.02% sodium azide.
Storage	Store at -20°C/1 year

Application Details

Western Blot: 1/500 - 1/2000.

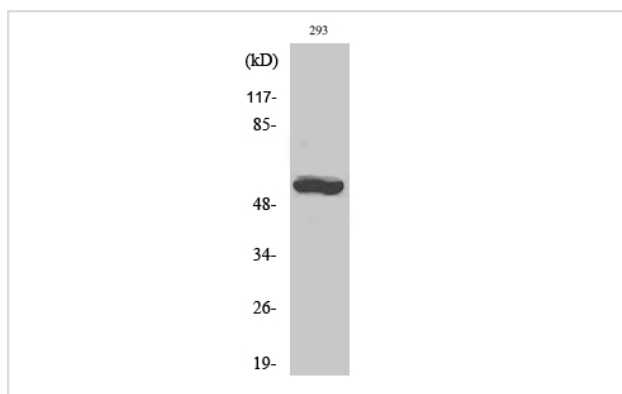
Immunohistochemistry: 1/100 - 1/300.

Immunofluorescence: 1/200 - 1/1000.

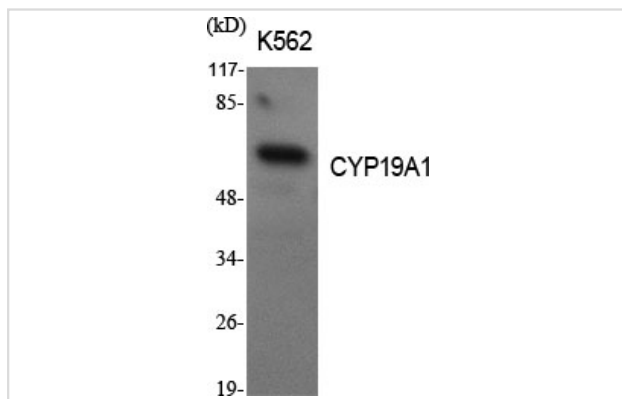
ELISA: 1/20000.

Not yet tested in other applications.

Images



Western Blot analysis of 293 cells using CYP19A1 Polyclonal Antibody



Western Blot analysis of K562 cells using CYP19A1 Polyclonal Antibody

Published Papers

el at., Melatonin stimulates aromatase expression and estradiol production in human granulosa-lutein cells: relevance for high serum estradiol levels in patients with ovarian hyperstimulation syndrome. In *Exp Mol Med* on 2020 Aug by Jung-Chien Cheng, Lanlan Fang, et al..PMID:32855437, , (2020)
[PMID:32855437](#)

Note: This product is for in vitro research use only and is not intended for use in humans or animals.