

# Integrin $\alpha$ V Polyclonal Antibody

Catalog No: #41068

Package Size: #41068-1 50ul #41068-2 100ul

Orders: [order@signalwayantibody.com](mailto:order@signalwayantibody.com)Support: [tech@signalwayantibody.com](mailto:tech@signalwayantibody.com)

## Description

Product Name	Integrin $\alpha$ V Polyclonal Antibody
Host Species	Rabbit
Clonality	Polyclonal
Purification	The antibody was affinity-purified from rabbit antiserum by affinity-chromatography using epitope-specific immunogen.
Applications	WB IHC IF ELISA
Species Reactivity	Hu Ms
Specificity	Integrin $\alpha$ V Polyclonal Antibody detects endogenous levels of Integrin $\alpha$ V protein.
Immunogen Description	Synthesized peptide derived from the Internal region of human Integrin $\alpha$ V.
Target Name	Integrin $\alpha$ V
Other Names	ITGAV; MSK8; VNRA; Integrin alpha-V; Vitronectin receptor subunit alpha; CD antigen CD51
Accession No.	Swiss-Prot: P06756NCBI Gene ID: 3685
SDS-PAGE MW	135kd
Concentration	1mg/ml
Formulation	Liquid in PBS containing 50% glycerol, 0.5% BSA and 0.02% sodium azide.
Storage	Store at -20°C/1 year

## Application Details

Western Blot: 1/500 - 1/2000.

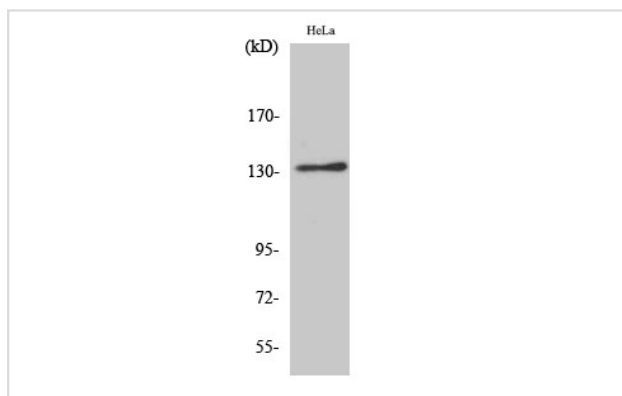
Immunohistochemistry: 1/100 - 1/300.

IF: 1/50-1/200

ELISA: 1/20000.

Not yet tested in other applications.

## Images



Western Blot analysis of HeLa cells using Integrin  $\alpha$ V Polyclonal Antibody

---

Note: This product is for in vitro research use only and is not intended for use in humans or animals.