

## JNK1/2/3 Polyclonal Antibody

Catalog No: #41085



Package Size: #41085-1 50ul #41085-2 100ul

Orders: [order@signalwayantibody.com](mailto:order@signalwayantibody.com)Support: [tech@signalwayantibody.com](mailto:tech@signalwayantibody.com)

## Description

Product Name	JNK1/2/3 Polyclonal Antibody
Host Species	Rabbit
Clonality	Polyclonal
Purification	The antibody was affinity-purified from rabbit antiserum by affinity-chromatography using epitope-specific immunogen.
Applications	WB IHC IF ELISA
Species Reactivity	Hu Ms Rt
Specificity	JNK1/2/3 Polyclonal Antibody detects endogenous levels of JNK1/2/3 protein.
Immunogen Type	peptide
Immunogen Description	Synthesized peptide derived from human JNK1/2/3 around the non-phosphorylation site of T183.
Target Name	JNK1/2/3
Other Names	MAPK8; JNK1; PRKM8; SAPK1; SAPK1C; Mitogen-activated protein kinase 8; MAP kinase 8; MAPK 8; JNK-46; Stress-activated protein kinase 1c; SAPK1c; Stress-activated protein kinase JNK1; c-Jun N-terminal kinase 1; MAPK9; JNK2; PRKM9; SAPK1A; Mi
Accession No.	Swiss-Prot: P45983/P45984/P53779NCBI Gene ID: 5599/5601/5602
SDS-PAGE MW	44kd
Concentration	1mg/ml
Formulation	Liquid in PBS containing 50% glycerol, 0.5% BSA and 0.02% sodium azide.
Storage	Store at -20°C/1 year

## Application Details

Western Blot: 1/500 - 1/2000.

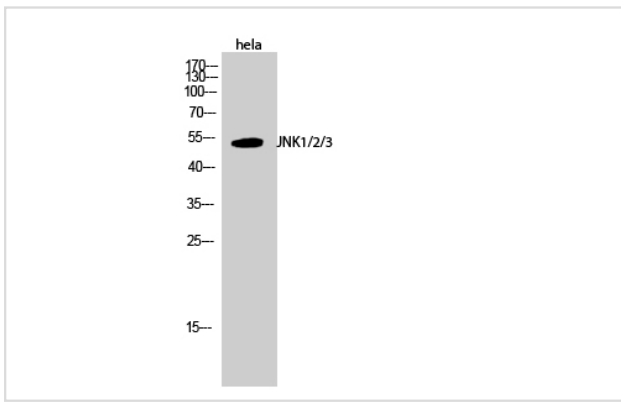
Immunohistochemistry: 1/100 - 1/300.

Immunofluorescence: 1/200 - 1/1000.

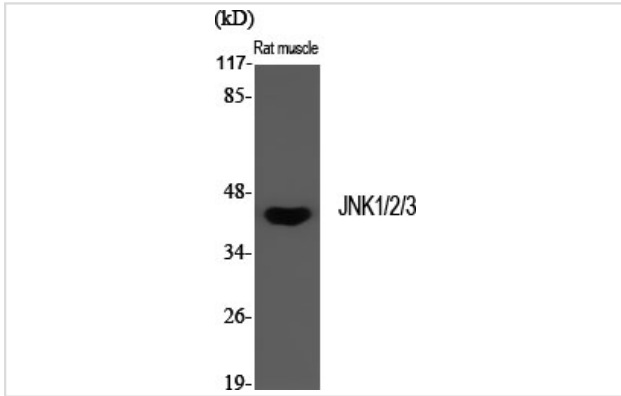
ELISA: 1/10000.

Not yet tested in other applications.

## Images



Western Blot analysis of hela cells using JNK1/2/3 Polyclonal Antibody



Western Blot analysis of RAT-MUSCLE cells using JNK1/2/3 Polyclonal Antibody

---

Note: This product is for in vitro research use only and is not intended for use in humans or animals.