

Laminin α -4 Polyclonal Antibody

Catalog No: #41101



Package Size: #41101-1 50ul #41101-2 100ul

Orders: order@signalwayantibody.comSupport: tech@signalwayantibody.com

Description

Product Name	Laminin α -4 Polyclonal Antibody
Host Species	Rabbit
Clonality	Polyclonal
Purification	The antibody was affinity-purified from rabbit antiserum by affinity-chromatography using epitope-specific immunogen.
Applications	WB IHC IF ELISA
Species Reactivity	Hu Ms
Specificity	Laminin α -4 Polyclonal Antibody detects endogenous levels of Laminin α -4 protein.
Immunogen Type	peptide
Immunogen Description	Synthesized peptide derived from the Internal region of human Laminin α -4.
Target Name	Laminin α -4
Other Names	LAMA4; Laminin subunit alpha-4; Laminin-14 subunit alpha; Laminin-8 subunit alpha; Laminin-9 subunit alpha
Accession No.	Swiss-Prot: Q16363NCBI Gene ID: 3910
SDS-PAGE MW	203kd
Concentration	1mg/ml
Formulation	Liquid in PBS containing 50% glycerol, 0.5% BSA and 0.02% sodium azide.
Storage	Store at -20°C/1 year

Application Details

Western Blot: 1/500 - 1/2000.

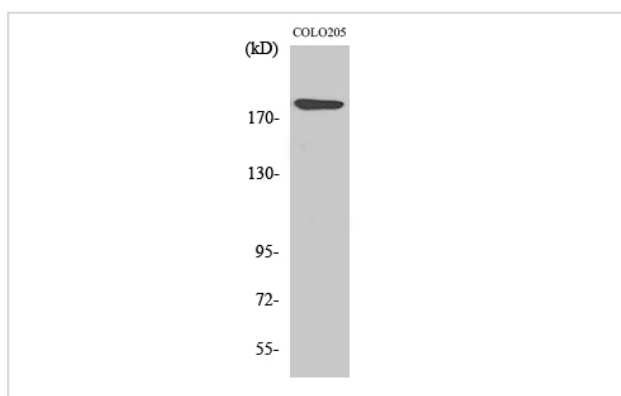
Immunohistochemistry: 1/100 - 1/300.

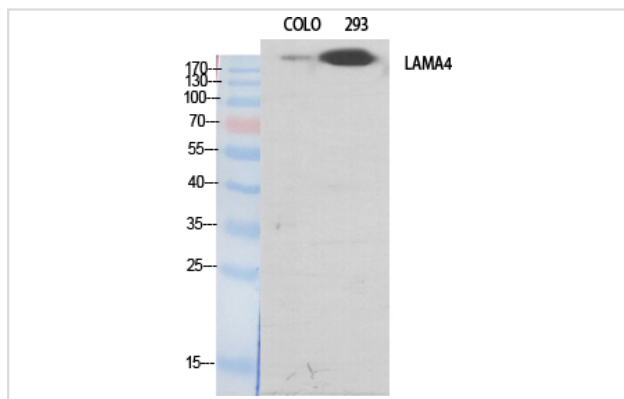
Immunofluorescence: 1/200 - 1/1000.

ELISA: 1/40000.

Not yet tested in other applications.

Images

Western Blot analysis of 293 cells using Laminin α -4 Polyclonal Antibody



Western Blot analysis of COLO 293 cells using Laminin α -4 Polyclonal Antibody

Note: This product is for in vitro research use only and is not intended for use in humans or animals.