

# LDLRAD2 Polyclonal Antibody

Catalog No: #41104

Package Size: #41104-1 50ul #41104-2 100ul

Orders: [order@signalwayantibody.com](mailto:order@signalwayantibody.com)Support: [tech@signalwayantibody.com](mailto:tech@signalwayantibody.com)

## Description

Product Name	LDLRAD2 Polyclonal Antibody
Host Species	Rabbit
Clonality	Polyclonal
Purification	The antibody was affinity-purified from rabbit antiserum by affinity-chromatography using epitope-specific immunogen.
Applications	WB ELISA
Species Reactivity	Hu
Specificity	LDLRAD2 Polyclonal Antibody detects endogenous levels of LDLRAD2 protein.
Immunogen Type	peptide
Immunogen Description	Synthesized peptide derived from the Internal region of human LDLRAD2.
Target Name	LDLRAD2
Other Names	LDLRAD2; Low-density lipoprotein receptor class A domain-containing protein 2
Accession No.	Swiss-Prot: Q5SZI1NCBI Gene ID: 401944
SDS-PAGE MW	29kd
Concentration	1mg/ml
Formulation	Liquid in PBS containing 50% glycerol, 0.5% BSA and 0.02% sodium azide.
Storage	Store at -20°C/1 year

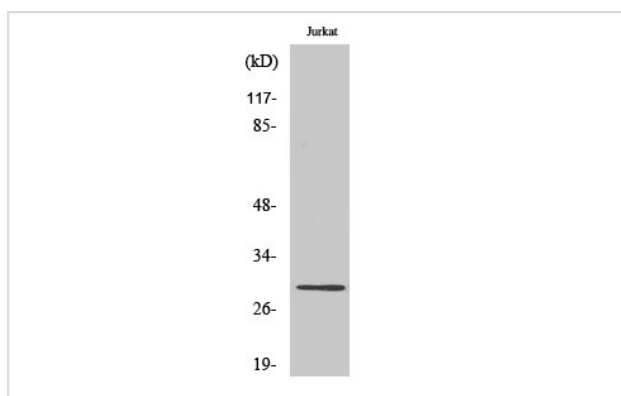
## Application Details

Western Blot: 1/500 - 1/2000.

ELISA: 1/20000.

Not yet tested in other applications.

## Images



Western Blot analysis of NIH-3T3 cells using LDLRAD2 Polyclonal Antibody

---

Note: This product is for in vitro research use only and is not intended for use in humans or animals.