

## LIMK-1 Polyclonal Antibody

Catalog No: #41107



Package Size: #41107-1 50ul #41107-2 100ul

Orders: [order@signalwayantibody.com](mailto:order@signalwayantibody.com)Support: [tech@signalwayantibody.com](mailto:tech@signalwayantibody.com)

## Description

Product Name	LIMK-1 Polyclonal Antibody
Host Species	Rabbit
Clonality	Polyclonal
Purification	The antibody was affinity-purified from rabbit antiserum by affinity-chromatography using epitope-specific immunogen.
Applications	WB IHC IF ELISA
Species Reactivity	Hu Ms Rt
Specificity	LIMK-1 Polyclonal Antibody detects endogenous levels of LIMK-1 protein.
Immunogen Type	peptide
Immunogen Description	Synthesized peptide derived from the Internal region of human LIMK-1.
Target Name	LIMK-1
Other Names	LIMK1; LIMK; LIM domain kinase 1; LIMK-1
Accession No.	Swiss-Prot: P53667NCBI Gene ID: 3984
SDS-PAGE MW	73kd
Concentration	1mg/ml
Formulation	Liquid in PBS containing 50% glycerol, 0.5% BSA and 0.02% sodium azide.
Storage	Store at -20°C/1 year

## Application Details

Western Blot: 1/500 - 1/2000.

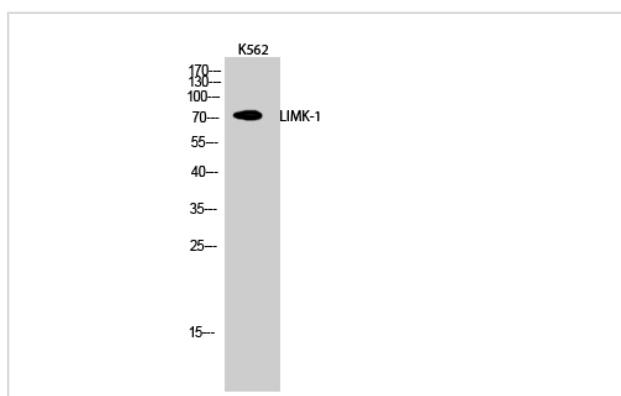
Immunohistochemistry: 1/100 - 1/300.

Immunofluorescence: 1/200 - 1/1000.

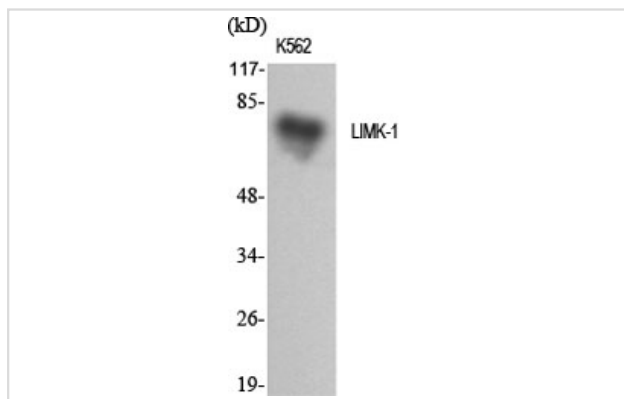
ELISA: 1/20000.

Not yet tested in other applications.

## Images



Western Blot analysis of K562 cells using LIMK-1 Polyclonal Antibody



Western Blot analysis of K562 cells using LIMK-1 Polyclonal Antibody

---

Note: This product is for in vitro research use only and is not intended for use in humans or animals.