

Lunatic Fringe Polyclonal Antibody

Catalog No: #41114



Package Size: #41114-1 50ul #41114-2 100ul

Orders: order@signalwayantibody.comSupport: tech@signalwayantibody.com

Description

Product Name	Lunatic Fringe Polyclonal Antibody
Host Species	Rabbit
Clonality	Polyclonal
Purification	The antibody was affinity-purified from rabbit antiserum by affinity-chromatography using epitope-specific immunogen.
Applications	WB ELISA
Species Reactivity	Hu Ms Rt
Specificity	Lunatic Fringe Polyclonal Antibody detects endogenous levels of Lunatic Fringe protein.
Immunogen Type	peptide
Immunogen Description	Synthesized peptide derived from the Internal region of human Lunatic Fringe.
Target Name	Lunatic Fringe
Other Names	LFNG; Beta-1; 3-N-acetylglucosaminyltransferase lunatic fringe; O-fucosylpeptide 3-beta-N-acetylglucosaminyltransferase
Accession No.	Swiss-Prot: Q8NES3NCBI Gene ID: 3955
SDS-PAGE MW	42kd
Concentration	1mg/ml
Formulation	Liquid in PBS containing 50% glycerol, 0.5% BSA and 0.02% sodium azide.
Storage	Store at -20°C/1 year

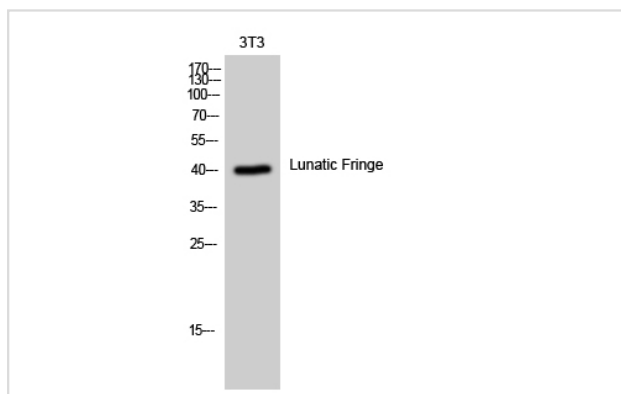
Application Details

Western Blot: 1/500 - 1/2000.

ELISA: 1/10000.

Not yet tested in other applications.

Images



Western Blot analysis of 3T3 cells using Lunatic Fringe Polyclonal Antibody

Note: This product is for in vitro research use only and is not intended for use in humans or animals.