

## LYAR Polyclonal Antibody

Catalog No: #41115



Package Size: #41115-1 50ul #41115-2 100ul

Orders: [order@signalwayantibody.com](mailto:order@signalwayantibody.com)Support: [tech@signalwayantibody.com](mailto:tech@signalwayantibody.com)

## Description

|                       |   |
|-----------------------|---|
| Product Name          | LYAR Polyclonal Antibody  |
| Host Species          | Rabbit  |
| Clonality             | Polyclonal  |
| Purification          | The antibody was affinity-purified from rabbit antiserum by affinity-chromatography using epitope-specific immunogen. |
| Applications          | WB IHC ELISA  |
| Species Reactivity    | Hu  |
| Specificity           | LYAR Polyclonal Antibody detects endogenous levels of LYAR protein.   |
| Immunogen Type        | peptide   |
| Immunogen Description | Synthesized peptide derived from the Internal region of human LYAR.   |
| Target Name           | LYAR  |
| Other Names           | LYAR; PNAS-5; Cell growth-regulating nucleolar protein  |
| Accession No.         | Swiss-Prot: Q9NX58NCBI Gene ID: 55646   |
| SDS-PAGE MW           | 44kd  |
| Concentration         | 1mg/ml  |
| Formulation           | Liquid in PBS containing 50% glycerol, 0.5% BSA and 0.02% sodium azide.   |
| Storage               | Store at -20°C/1 year   |

## Application Details

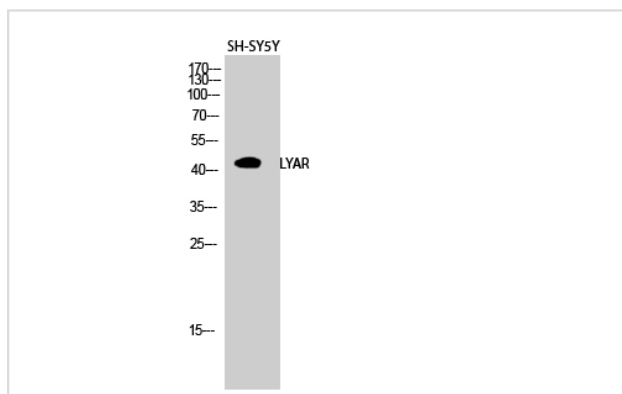
Western Blot: 1/500 - 1/2000.

Immunohistochemistry: 1/100 - 1/300.

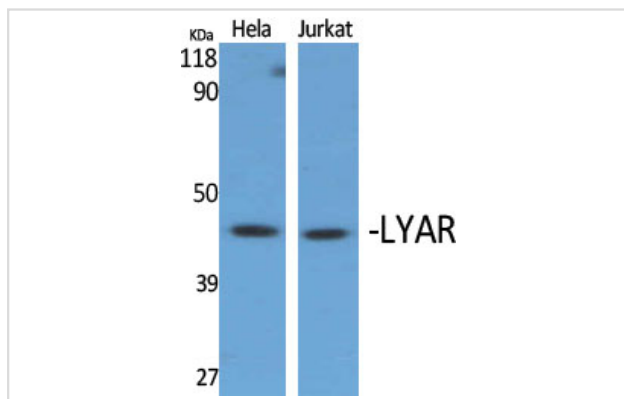
ELISA: 1/10000.

Not yet tested in other applications.

## Images



Western Blot analysis of SH-SY5Y cells using LYAR Polyclonal Antibody



Western Blot analysis of HELA Jurkat cells using LYAR Polyclonal Antibody

---

Note: This product is for in vitro research use only and is not intended for use in humans or animals.