

MK Polyclonal Antibody

Catalog No: #41146



Package Size: #41146-1 50ul #41146-2 100ul

Orders: order@signalwayantibody.comSupport: tech@signalwayantibody.com

Description

Product Name	MK Polyclonal Antibody
Host Species	Rabbit
Clonality	Polyclonal
Purification	The antibody was affinity-purified from rabbit antiserum by affinity-chromatography using epitope-specific immunogen.
Applications	WB ELISA IHC IF
Species Reactivity	Hu Rt
Specificity	MK Polyclonal Antibody detects endogenous levels of MK protein.
Immunogen Description	Synthesized peptide derived from the C-terminal region of human MK.
Target Name	MK
Other Names	MDK; MK1; NEGF2; Midkine; MK; Amphiregulin-associated protein; ARAP; Midgestation and kidney protein; Neurite outgrowth-promoting factor 2; Neurite outgrowth-promoting protein
Accession No.	Swiss-Prot: P21741NCBI Gene ID: 4192
SDS-PAGE MW	18kd
Concentration	1mg/ml
Formulation	Liquid in PBS containing 50% glycerol, 0.5% BSA and 0.02% sodium azide.
Storage	Store at -20°C/1 year

Application Details

Western Blot: 1/500 - 1/2000.

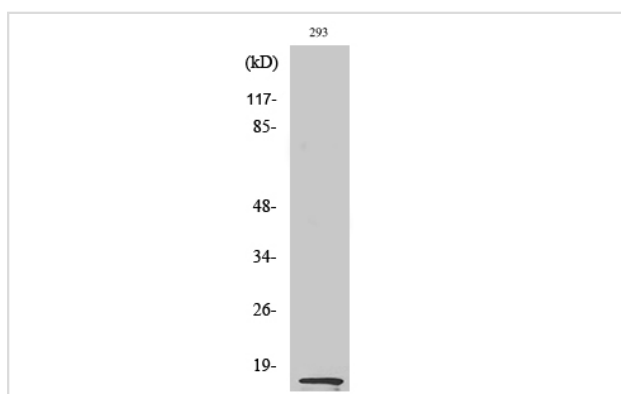
ELISA: 1/40000.

IHC-p: 1:100-300

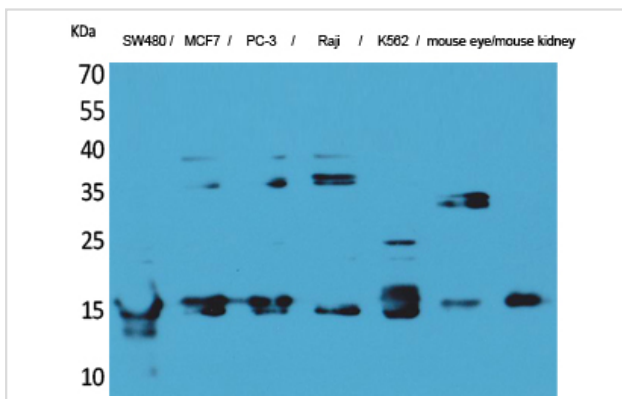
IF 1:50-200

Not yet tested in other applications.

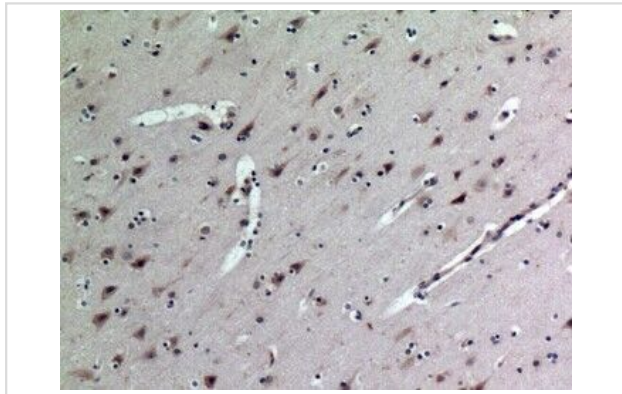
Images



Western Blot analysis of 293 cells using MK Polyclonal Antibody



Western Blot analysis of SW480 MCF7 PC-3 Raji K562 mouse eye mouse kidney cells using MK Polyclonal Antibody



Immunohistochemical analysis of paraffin-embedded human-brain, antibody was diluted at 1:100

Note: This product is for in vitro research use only and is not intended for use in humans or animals.