

DNA pol delta cat antibody

Catalog No: #22639

Orders: order@signalwayantibody.comSupport: tech@signalwayantibody.com

Description

Product Name	DNA pol delta cat antibody
Host Species	Rabbit
Clonality	Polyclonal
Purification	Purified by antigen-affinity chromatography.
Applications	WB IF
Species Reactivity	Hu
Immunogen Type	Recombinant protein
Immunogen Description	Recombinant protein fragment contain a sequence corresponding to a region within amino acids 685 and 1041 of DNA pol delta cat
Target Name	DNA pol delta cat
Other Names	CDC2; POLD
Accession No.	NCBI Gene ID: 5424NCBI mRNA#: NM_002691NCBI Protein#: NP_002682
Concentration	0.6mg/ml
Formulation	Supplied in 0.1M Tris-buffered saline with 10% Glycerol (pH7.0). 0.01% Thimerosal was added as a preservative.
Storage	Store at -20°C for long term preservation (recommended). Store at 4°C for short term use.

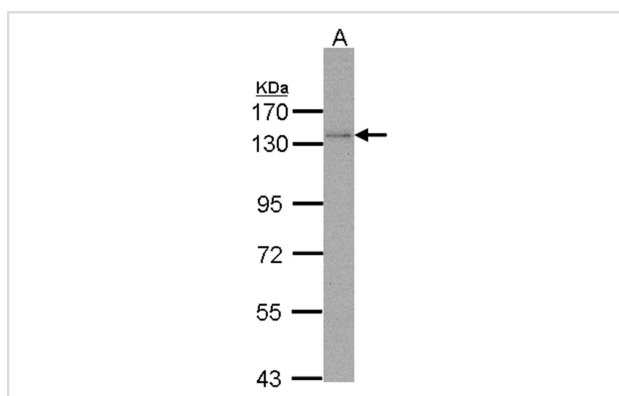
Application Details

Predicted MW: 124kd

Western blotting: 1:500-1:3000

Immunofluorescence: 1:100-1:200

Images

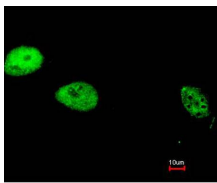


Sample (30 ug of whole cell lysate)

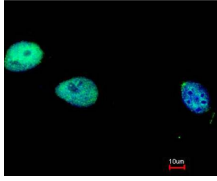
A: Molt-4

7.5% SDS PAGE

Primary antibody diluted at 1: 3000



Merged with DNA probe



Immunofluorescence analysis of paraformaldehyde-fixed HeLa, using DNA Polymerase delta, catalytic subunit antibody at 1: 200 dilution.

Background

The DNA polymerase delta complex is involved in DNA replication and repair, and it consists of the proliferating cell nuclear antigen (PCNA; MIM 176740), the multisubunit replication factor C (see MIM 102579), and the 4 subunit polymerase complex: POLD1, POLD2 (MIM 600815), POLD3 (MIM 611415), and POLD4 (MIM 611525) (Liu and Warbrick, 2006 [PubMed 16934752]).[supplied by OMIM]

Note: This product is for in vitro research use only and is not intended for use in humans or animals.