

# Netrin-1 Polyclonal Antibody

Catalog No: #41215



Package Size: #41215-1 50ul #41215-2 100ul

Orders: [order@signalwayantibody.com](mailto:order@signalwayantibody.com)Support: [tech@signalwayantibody.com](mailto:tech@signalwayantibody.com)

## Description

Product Name	Netrin-1 Polyclonal Antibody
Host Species	Rabbit
Clonality	Polyclonal
Purification	The antibody was affinity-purified from rabbit antiserum by affinity-chromatography using epitope-specific immunogen.
Applications	WB IHC IF ELISA
Species Reactivity	Hu Ms Rt Mk
Specificity	Netrin-1 Polyclonal Antibody detects endogenous levels of Netrin-1 protein.
Immunogen Description	Synthesized peptide derived from the C-terminal region of human Netrin-1.
Target Name	Netrin-1
Other Names	NTN1; NTN1L; Netrin-1; Epididymis tissue protein Li 131P
Accession No.	Swiss-Prot: O95631NCBI Gene ID: 9423
SDS-PAGE MW	75kd
Concentration	1mg/ml
Formulation	Liquid in PBS containing 50% glycerol, 0.5% BSA and 0.02% sodium azide.
Storage	Store at -20°C/1 year

## Application Details

Western Blot: 1/500 - 1/2000.

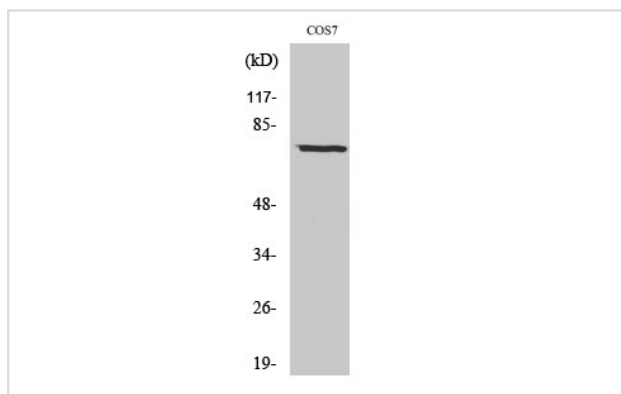
Immunofluorescence: 1/50-1/200

Immunohistochemistry: 1/100 - 1/300.

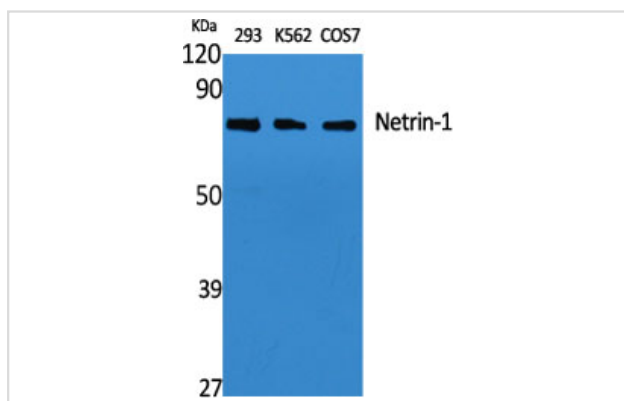
ELISA: 1/40000.

Not yet tested in other applications.

## Images



Western Blot analysis of COS7 cells using Netrin-1 Polyclonal Antibody



Western Blot analysis of 293 K562 COS cells using Netrin-1 Polyclonal Antibody

---

Note: This product is for in vitro research use only and is not intended for use in humans or animals.