

## Neu Polyclonal Antibody

Catalog No: #41218



Package Size: #41218-1 50ul #41218-2 100ul

Orders: [order@signalwayantibody.com](mailto:order@signalwayantibody.com)Support: [tech@signalwayantibody.com](mailto:tech@signalwayantibody.com)

## Description

Product Name	Neu Polyclonal Antibody
Host Species	Rabbit
Clonality	Polyclonal
Purification	The antibody was affinity-purified from rabbit antiserum by affinity-chromatography using epitope-specific immunogen.
Applications	WB;IHC;IF;ELISA
Species Reactivity	Hu Ms Rt
Specificity	Neu Polyclonal Antibody detects endogenous levels of Neu protein.
Immunogen Description	Synthesized peptide derived from human Neu around the non-phosphorylation site of Y1248.
Target Name	Neu
Other Names	ERBB2; HER2; MLN19; NEU; NGL; Receptor tyrosine-protein kinase erbB-2; Metastatic lymph node gene 19 protein; MLN 19; Proto-oncogene Neu; Proto-oncogene c-ErbB-2; Tyrosine kinase-type cell surface receptor HER2; p185erbB2; CD antigen CD340
Accession No.	Swiss-Prot: P04626NCBI Gene ID: 2064
SDS-PAGE MW	137KD-180kd
Concentration	1mg/ml
Formulation	Liquid in PBS containing 50% glycerol, 0.5% BSA and 0.02% sodium azide.
Storage	Store at -20°C/1 year

## Application Details

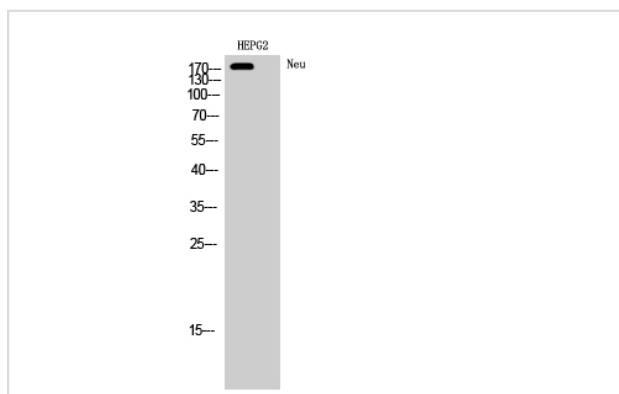
WB 1:500 - 1:2000.

IHC 1:100 - 1:300.

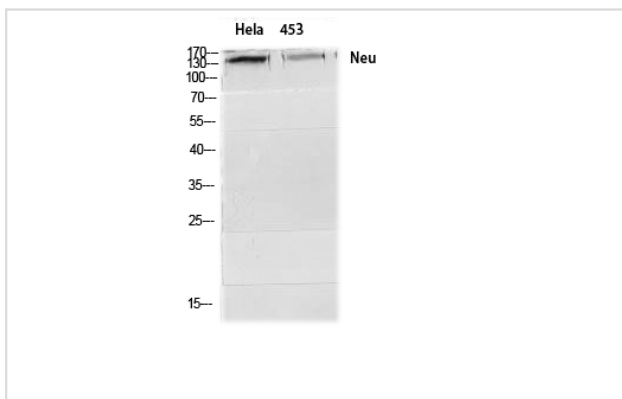
ELISA: 1:5000..

IF 1:50-200

## Images



Western Blot analysis of HEPG2 cells using Neu Polyclonal Antibody



Western Blot analysis of HeLa 453 cells using Neu Polyclonal Antibody

---

Note: This product is for in vitro research use only and is not intended for use in humans or animals.