

Nrf2 Polyclonal Antibody

Catalog No: #41255



Package Size: #41255-1 50ul #41255-2 100ul

Orders: order@signalwayantibody.comSupport: tech@signalwayantibody.com

Description

Product Name	Nrf2 Polyclonal Antibody
Host Species	Rabbit
Clonality	Polyclonal
Purification	The antibody was affinity-purified from rabbit antiserum by affinity-chromatography using epitope-specific immunogen.
Applications	WB IHC IF ELISA
Species Reactivity	Hu Ms Rt
Specificity	Nrf2 Polyclonal Antibody detects endogenous levels of Nrf2 protein.
Immunogen Type	peptide
Immunogen Description	Synthesized peptide derived from the C-terminal region of human Nrf2.
Target Name	Nrf2
Other Names	NFE2L2; NRF2; Nuclear factor erythroid 2-related factor 2; NF-E2-related factor 2; NFE2-related factor 2; HEBP1; Nuclear factor; erythroid derived 2, like 2
Accession No.	Swiss-Prot: Q16236NCBI Gene ID: 4780
SDS-PAGE MW	68kd
Concentration	1mg/ml
Formulation	Liquid in PBS containing 50% glycerol, 0.5% BSA and 0.02% sodium azide.
Storage	Store at -20°C/1 year

Application Details

Western Blot: 1/500 - 1/2000.

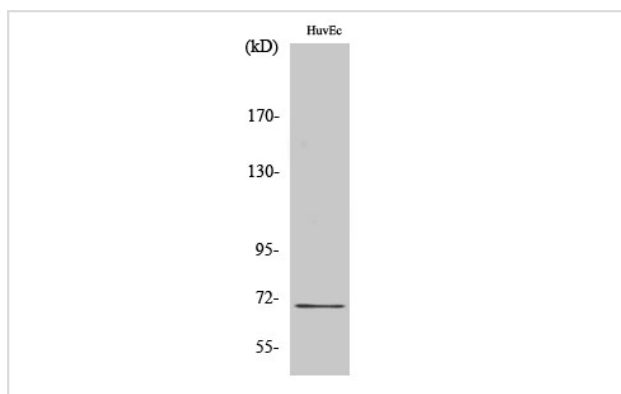
Immunohistochemistry: 1/100 - 1/300.

Immunofluorescence: 1/200 - 1/1000.

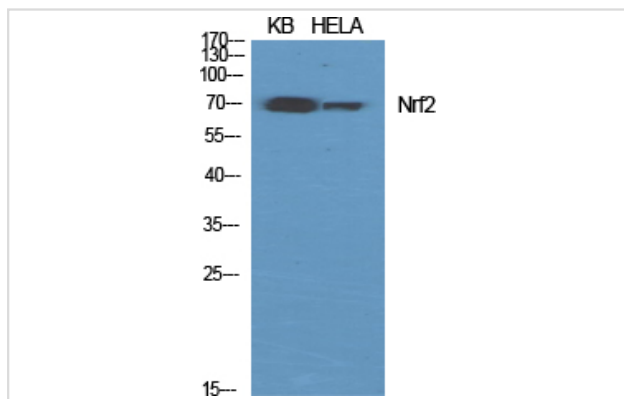
ELISA: 1/40000.

Not yet tested in other applications.

Images



Western Blot analysis of HuvEc cells using Nrf2 Polyclonal Antibody



Western Blot analysis of KB HELA cells using Nrf2 Polyclonal Antibody

Published Papers

el at., c-Myc protects hepatocellular carcinoma cell from ferroptosis induced by glutamine deprivation via upregulating GOT1 and Nrf2 *In Mol Biol Rep* 2023 Aug;56(8):1587-1595. doi: 10.1007/s12270-023-01876-5. PMID: 37358765

[PMID:37358765](#)

el at., Asperuloside suppressing oxidative stress and inflammation in DSS-induced chronic colitis and RAW 264.7 macrophages via Nrf2/HO-1 and NF- κ B pathways. *In Chem Biol Interact* on 2021 Aug 1 by Yong-Er Chen, Shi-Jie Xu et al. PMID: 33974900

[PMID:33974900](#)

Note: This product is for in vitro research use only and is not intended for use in humans or animals.