

ESM1 Antibody

Catalog No: #47244

Orders: order@signalwayantibody.comSupport: tech@signalwayantibody.com

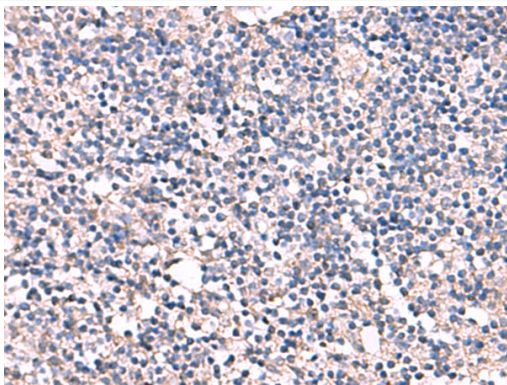
Description

| | |
|-----------------------|---|
| Product Name | ESM1 Antibody |
| Host Species | Rabbit |
| Clonality | Polyclonal |
| Purification | Antigen affinity purification |
| Applications | IHC |
| Species Reactivity | Hu |
| Specificity | The antibody detects endogenous levels of total ESM1 protein. |
| Immunogen Type | Peptide |
| Immunogen Description | Fusion protein of human ESM1 |
| Target Name | ESM1 |
| Other Names | endocan |
| Accession No. | Swiss-Prot#:Q9NQ30NCBI Gene ID:11082Gene Accssion:BC011989 |
| Concentration | 1 |
| Formulation | Rabbit IgG in pH7.4 PBS, 0.05% NaN ₃ , 40% Glycerol. |
| Storage | Store at -20°C |

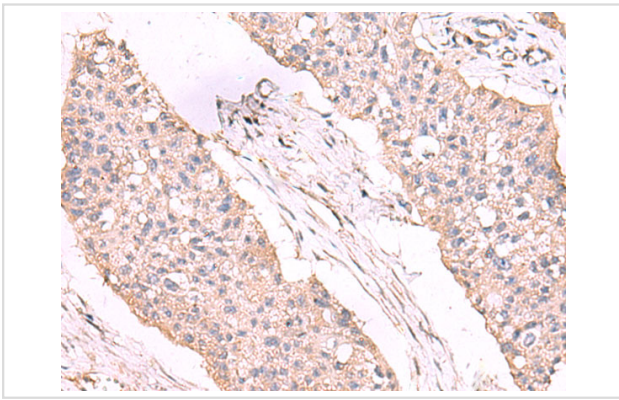
Application Details

IHC dilution:1: 50-300

Images



The image is immunohistochemistry of paraffin-embedded Human tonsil tissue using 47244(ESM1 Antibody) at dilution 1/55.(Original magnification: 200)



The image is immunohistochemistry of paraffin-embedded Human esophagus cancer tissue using 47244(ESM1 Antibody) at dilution 1/55.(Original magnification: 200)

Background

This gene encodes a secreted protein which is mainly expressed in the endothelial cells in human lung and kidney tissues. The expression of this gene is regulated by cytokines, suggesting that it may play a role in endothelium-dependent pathological disorders. The transcript contains multiple polyadenylation and mRNA instability signals. Two transcript variants encoding different isoforms have been found for this gene.

Note: This product is for in vitro research use only and is not intended for use in humans or animals.