

ZBTB8A Antibody

Catalog No: #47251

Orders: order@signalwayantibody.comSupport: tech@signalwayantibody.com

Description

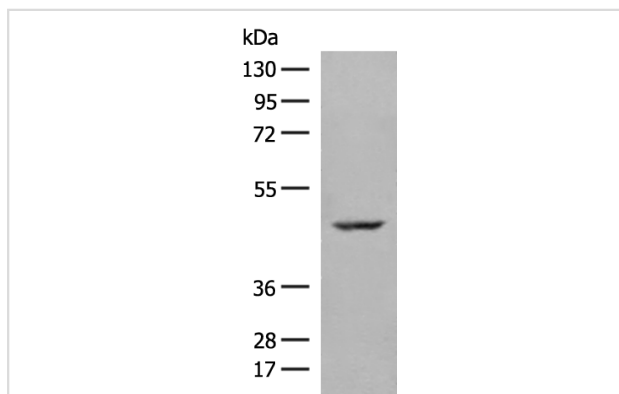
Product Name	ZBTB8A Antibody
Host Species	Rabbit
Clonality	Polyclonal
Purification	Antigen affinity purification
Applications	WB, IHC
Species Reactivity	Hu, Ms, Rt
Specificity	The antibody detects endogenous levels of total ZBTB8A protein.
Immunogen Type	Peptide
Immunogen Description	Fusion protein of human ZBTB8A
Target Name	ZBTB8A
Other Names	BOZF1; ZBTB8; ZNF916A
Accession No.	Swiss-Prot#:Q96BR9NCBI Gene ID:653121Gene Accssion:BC015239
Calculated MW	50 kDa
Concentration	0.6
Formulation	Rabbit IgG in pH7.4 PBS, 0.05% NaN ₃ , 40% Glycerol.
Storage	Store at -20°C

Application Details

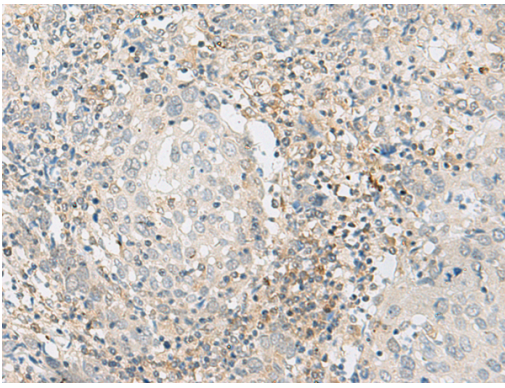
WB dilution:1:500-2000

IHC dilution:1: 50-300

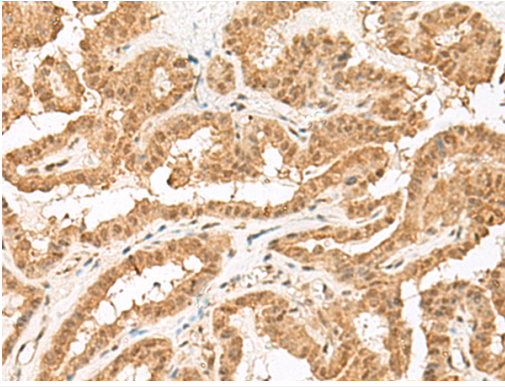
Images



Gel: 8%SDS-PAGE, Lysate: 40 μ g, Lane: 293T cell lysate,
 Primary antibody:47251(ZBTB8A Antibody) at dilution 1/250,
 Secondary antibody: Goat anti rabbit IgG at 1/8000 dilution,
 Exposure time: 10 seconds



The image is immunohistochemistry of paraffin-embedded Human cervical cancer tissue using 47251(ZBTB8A Antibody) at dilution 1/70.(Original magnification: 200)



The image is immunohistochemistry of paraffin-embedded Human thyroid cancer tissue using 47251(ZBTB8A Antibody) at dilution 1/70.(Original magnification: 200)

Background

May be involved in transcriptional regulation.

Note: This product is for in vitro research use only and is not intended for use in humans or animals.