

THADA Antibody

Catalog No: #47255

Orders: order@signalwayantibody.comSupport: tech@signalwayantibody.com

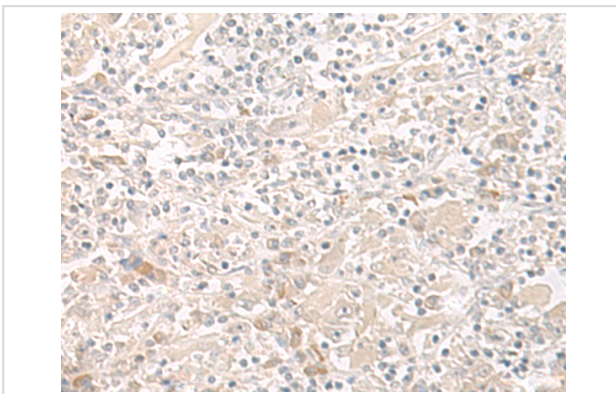
Description

Product Name	THADA Antibody
Host Species	Rabbit
Clonality	Polyclonal
Purification	Antigen affinity purification
Applications	IHC
Species Reactivity	Hu
Specificity	The antibody detects endogenous levels of total THADA protein.
Immunogen Type	Peptide
Immunogen Description	Fusion protein of human THADA
Target Name	THADA
Other Names	GITA; ARMC13
Accession No.	Swiss-Prot#:Q6YHU6NCBI Gene ID:63892Gene Accssion:BC025773
Concentration	0.6
Formulation	Rabbit IgG in pH7.4 PBS, 0.05% NaN ₃ , 40% Glycerol.
Storage	Store at -20°C

Application Details

IHC dilution:1: 25-100

Images



The image is immunohistochemistry of paraffin-embedded Human liver cancer tissue using 47255(THADA Antibody) at dilution 1/35.(Original magnification: 200)

Background

This gene is the target of 2p21 chromosomal aberrations in benign thyroid adenomas. Single nucleotide polymorphisms (SNPs) in this gene may be associated with type 2 diabetes and polycystic ovary syndrome. The encoded protein is likely involved in the death receptor pathway and apoptosis.

Note: This product is for in vitro research use only and is not intended for use in humans or animals.