

THOP1 Antibody

Catalog No: #47258

Orders: order@signalwayantibody.comSupport: tech@signalwayantibody.com

Description

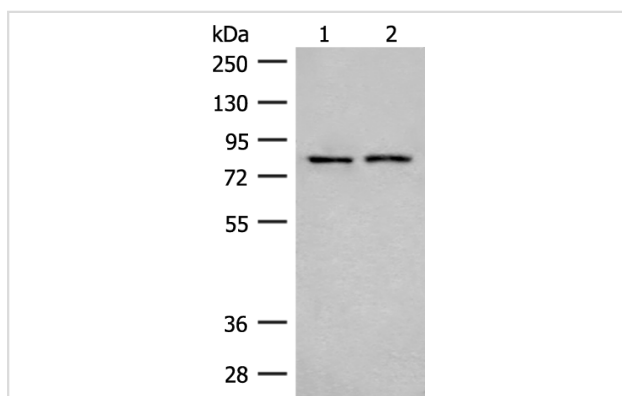
| | |
|-----------------------|-----------------------------------------------------------------|
| Product Name | THOP1 Antibody |
| Host Species | Rabbit |
| Clonality | Polyclonal |
| Purification | Antigen affinity purification |
| Applications | WB, IHC |
| Species Reactivity | Hu, Ms, Rt |
| Specificity | The antibody detects endogenous levels of total THOP1 protein. |
| Immunogen Type | Peptide |
| Immunogen Description | Fusion protein of human THOP1 |
| Target Name | THOP1 |
| Other Names | TOP; MP78; EP24.15; MEPD_HUMAN |
| Accession No. | Swiss-Prot#:P52888NCBI Gene ID:7064Gene Accssion:BC013878 |
| Calculated MW | 79 kDa |
| Concentration | 0.7 |
| Formulation | Rabbit IgG in pH7.4 PBS, 0.05% NaN ₃ , 40% Glycerol. |
| Storage | Store at -20°C |

Application Details

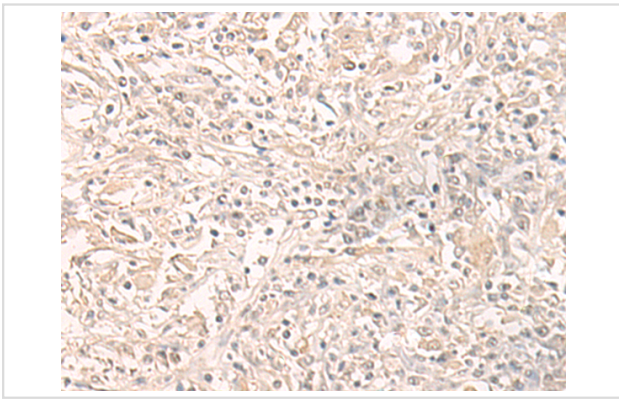
WB dilution:1:200-1000

IHC dilution:1: 30-150

Images



Gel: 8%SDS-PAGE, Lysate: 40 μ g, Lane 1-2: A172 cell and Human fetal brain tissue lysates, Primary antibody:47258(THOP1 Antibody) at dilution 1/250, Secondary antibody: Goat anti rabbit IgG at 1/8000 dilution, Exposure time: 2 minutes



The image is immunohistochemistry of paraffin-embedded Human liver cancer tissue using 47258(THOP1 Antibody) at dilution 1/40.(Original magnification: 200)

Background

The protein encoded by this gene is a kininase that uses zinc as a cofactor. The encoded oligopeptidase cleaves cytosolic peptides, making them unavailable for display on antigen-presenting cells. This protein also cleaves neuropeptides under 20 aa in length and can degrade beta-amyloid precursor protein to amyloidogenic peptides.

Note: This product is for in vitro research use only and is not intended for use in humans or animals.