

TIMM8A Antibody

Catalog No: #47262

Orders: order@signalwayantibody.comSupport: tech@signalwayantibody.com

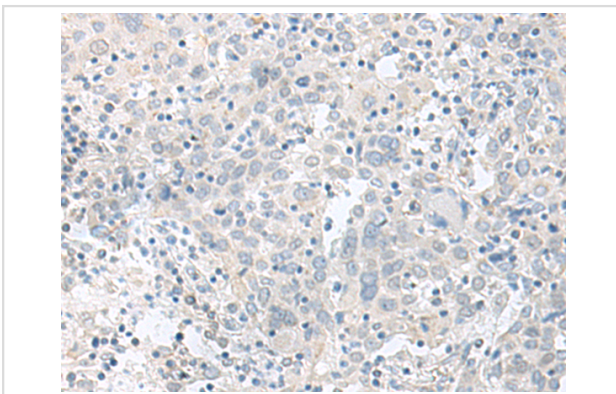
Description

Product Name	TIMM8A Antibody
Host Species	Rabbit
Clonality	Polyclonal
Purification	Antigen affinity purification
Applications	IHC
Species Reactivity	Hu, Ms, Rt
Specificity	The antibody detects endogenous levels of total TIMM8A protein.
Immunogen Type	Peptide
Immunogen Description	Fusion protein of human TIMM8A
Target Name	TIMM8A
Other Names	DDP; MTS; DDP1; DFN1; TIM8
Accession No.	Swiss-Prot#:O60220NCBI Gene ID:1678Gene Accssion:BC006994
Concentration	1.6
Formulation	Rabbit IgG in pH7.4 PBS, 0.05% NaN ₃ , 40% Glycerol.
Storage	Store at -20°C

Application Details

IHC dilution:1: 50-300

Images



The image is immunohistochemistry of paraffin-embedded Human cervical cancer tissue using 47262(TIMM8A Antibody) at dilution 1/90.(Original magnification: 200)

Background

This translocase is involved in the import and insertion of hydrophobic membrane proteins from the cytoplasm into the mitochondrial inner membrane. The gene is mutated in Mohr-Tranebjaerg syndrome/Deafness Dystonia Syndrome (MTS/DDS) and it is postulated that MTS/DDS is a mitochondrial disease caused by a defective mitochondrial protein import system. Defects in this gene also cause Jensen syndrome; an X-linked disease with opticoacoustic nerve atrophy and muscle weakness. This protein, along with TIMM13, forms a 70 kDa heterohexamer. Alternative splicing results in multiple transcript variants encoding distinct isoforms.

Note: This product is for in vitro research use only and is not intended for use in humans or animals.