

## C9orf116 Antibody

Catalog No: #47264

Orders: [order@signalwayantibody.com](mailto:order@signalwayantibody.com)Support: [tech@signalwayantibody.com](mailto:tech@signalwayantibody.com)

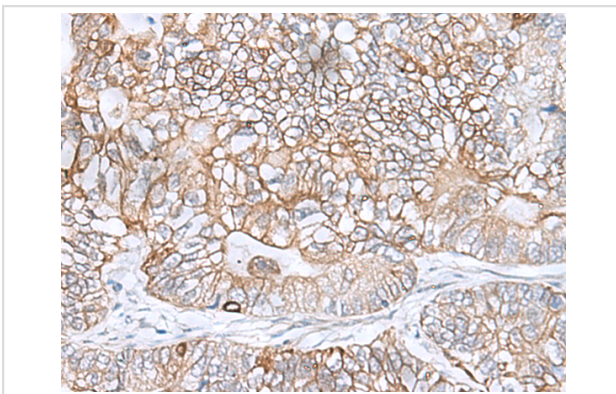
## Description

Product Name	C9orf116 Antibody
Host Species	Rabbit
Clonality	Polyclonal
Purification	Antigen affinity purification
Applications	IHC
Species Reactivity	Hu
Specificity	The antibody detects endogenous levels of total C9orf116 protein.
Immunogen Type	Peptide
Immunogen Description	Fusion protein of human C9orf116
Target Name	C9orf116
Other Names	PIERCE1; RbEST47
Accession No.	Swiss-Prot#:Q5BN46NCBI Gene ID:138162Gene Accssion:BC021261
Concentration	0.7
Formulation	Rabbit IgG in pH7.4 PBS, 0.05% NaN <sub>3</sub> , 40% Glycerol.
Storage	Store at -20°C

## Application Details

IHC dilution:1: 25-100

## Images



The image is immunohistochemistry of paraffin-embedded Human gastric cancer tissue using 47264(C9orf116 Antibody) at dilution 1/40. (Original magnification: 200)

## Background

C9orf116, also known as PIERCE1. PIERCE1 is an important p53 target gene contributing to normal DNA damage response and may play crucial roles in maintaining genomic integrity against genotoxic stresses, including UVC irradiation. PIERCE1 exists as two alternatively spliced isoforms and is predominantly expressed in human small cell lung cancer. PIERCE1 knockdown induces down-regulation of proapoptotic genes including Ei24, Apaf1 and PTEN, suggesting that PIERCE1 is a proapoptotic gene. It is helpful for in-depth understanding of p53 pathways and the design of new cancer therapies.

---

Note: This product is for in vitro research use only and is not intended for use in humans or animals.