

MGP Antibody

Catalog No: #47268

Orders: order@signalwayantibody.comSupport: tech@signalwayantibody.com

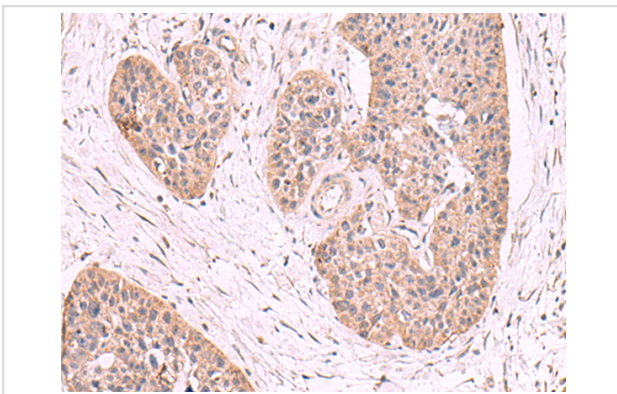
Description

| | |
|-----------------------|---|
| Product Name | MGP Antibody |
| Host Species | Rabbit |
| Clonality | Polyclonal |
| Purification | Antigen affinity purification |
| Applications | IHC |
| Species Reactivity | Hu, Ms, Rt |
| Specificity | The antibody detects endogenous levels of total MGP protein. |
| Immunogen Type | Peptide |
| Immunogen Description | Fusion protein of human MGP |
| Target Name | MGP |
| Other Names | NTI; GIG36; MGLAP |
| Accession No. | Swiss-Prot#:P08493NCBI Gene ID:4256Gene Accssion:BC005272 |
| Concentration | 0.8 |
| Formulation | Rabbit IgG in pH7.4 PBS, 0.05% NaN ₃ , 40% Glycerol. |
| Storage | Store at -20°C |

Application Details

IHC dilution:1: 50-300

Images



The image is immunohistochemistry of paraffin-embedded Human esophagus cancer tissue using 47268(MGP Antibody) at dilution 1/50.(Original magnification: 200)

Background

This gene encodes a member of the osteocalcin/matrix Gla family of proteins. The encoded vitamin K-dependent protein is secreted by chondrocytes and vascular smooth muscle cells, and functions as a physiological inhibitor of ectopic tissue calcification. Carboxylation status of the encoded protein is associated with calcification of the vasculature in human patients with cardiovascular disease and calcification of the synovial membranes in osteoarthritis patients. Mutations in this gene cause Keutel syndrome in human patients, which is characterized by abnormal cartilage calcification, peripheral pulmonary stenosis and facial hypoplasia.?

Note: This product is for in vitro research use only and is not intended for use in humans or animals.