

MRM1 Antibody

Catalog No: #47279

Orders: order@signalwayantibody.comSupport: tech@signalwayantibody.com

Description

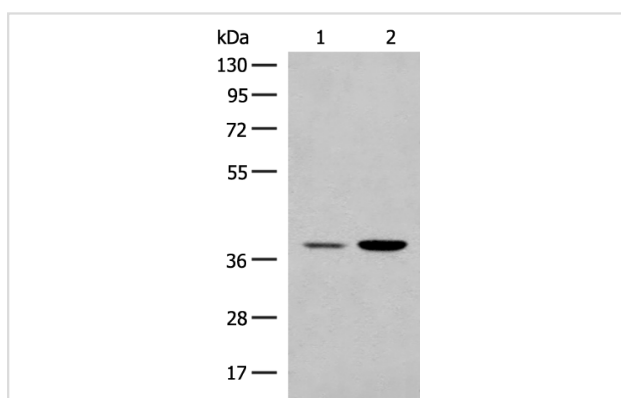
Product Name	MRM1 Antibody
Host Species	Rabbit
Clonality	Polyclonal
Purification	Antigen affinity purification
Applications	WB, IHC
Species Reactivity	Hu
Specificity	The antibody detects endogenous levels of total MRM1 protein.
Immunogen Type	Peptide
Immunogen Description	Fusion protein of human MRM1
Target Name	MRM1
Accession No.	Swiss-Prot#:Q6IN84NCBI Gene ID:79922Gene Accssion:BC009416
Calculated MW	39 kDa
Concentration	1.5
Formulation	Rabbit IgG in pH7.4 PBS, 0.05% NaN ₃ , 40% Glycerol.
Storage	Store at -20°C

Application Details

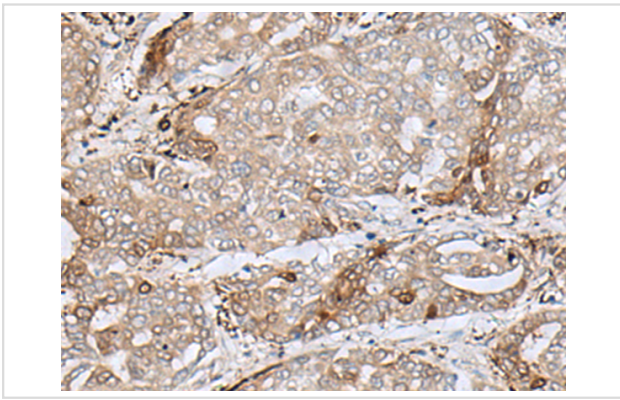
WB dilution:1:500-2000

IHC dilution:1: 50-300

Images



Gel: 8%SDS-PAGE, Lysate: 40 μ g, Lane 1-2: HEPG2 and K562 cell lysates, Primary antibody:47279(MRM1 Antibody) at dilution 1/400, Secondary antibody: Goat anti rabbit IgG at 1/8000 dilution, Exposure time: 20 seconds



The image is immunohistochemistry of paraffin-embedded Human liver cancer tissue using 47279(MRM1 Antibody) at dilution 1/85. (Original magnification: 200)

Background

S-adenosyl-L-methionine-dependent 2'-O-ribose methyltransferase that catalyzes the formation of 2'-O-methylguanosine at position 1145 (Gm1145) in the 16S mitochondrial large subunit ribosomal RNA (mtLSU rRNA), a universally conserved modification in the peptidyl transferase domain of the mtLSU rRNA.

Note: This product is for in vitro research use only and is not intended for use in humans or animals.